



# 2011-2012 CATALOG

*Clock Tower*

# Contents

<b>2011-2012 Catalog .....</b>	<b>1</b>
The History of Golden State Baptist College .....	4
From the Chancellor .....	6
From the President .....	7
<b>Doctrinal Statement.....</b>	<b>9</b>
<b>Institutional Distinctives .....</b>	<b>17</b>
<b>Admissions .....</b>	<b>21</b>
General Requirements .....	22
Applying for Admission.....	23
Placement Tests .....	26
<b>Frequently Asked Questions.....</b>	<b>27</b>
<b>Finances .....</b>	<b>33</b>
Fees .....	34
Summary of Expenses.....	35
Scholarships .....	36
<b>Academics.....</b>	<b>39</b>
Degrees Offered .....	40
Master of Ministries Program .....	41
Grading System.....	43
Graduation Requirements .....	46
<b>Degree Requirements.....</b>	<b>49</b>
General Studies Major (Ladies) .....	50
General Studies Major (Men) .....	51
Elementary Education Major .....	52
Secondary Education Major .....	53
Missions Major (Men).....	55
Missions Major (Ladies) .....	56
Music Education Major.....	57
Pastoral Theology Major.....	59
Pastoral Assistant Major .....	60
Secretarial Science Major.....	62
Associate of Church Ministries.....	63
<b>Class Descriptions.....</b>	<b>65</b>

## The History of Golden State Baptist College

The North Valley Baptist Church was established in 1975 with a small band of 75 people. In 1976, Dr. Jack Trieber was called to pastor this infant work. God has greatly blessed the ministry of Dr. Trieber. From 1975 to the present, more than a million people have come to hear the preaching of God's Word, with over 59,100 making a profession of faith in Christ for salvation and over 14,780 following the Lord in believer's baptism. Over these past 35 years, over 2,600,000 people have attended Sunday services at North Valley.



**Original Auditorium  
1979**

In these last 35 years, God has enabled the church to expand its facilities to include a 65,000-square-foot building on the Clyde Avenue property as well as a new 3000-seat auditorium on the De La Cruz property. The solid numerical growth of the North Valley Baptist Church also brought an expansion of the church ministries which includes 25 bus routes, a worldwide missions program supporting over 200 missionaries; ministries to the Filipino, Indian, and Spanish-speaking people; ministries to the deaf and the mentally handicapped; a retirement home ministry; and a ministry to a convalescent home adjacent to the church. A Christian school has also been established with students in K-4 through twelfth grade. All of this is the result of the burden of a pastor's heart. More than twenty years ago, Dr. Trieber began to see the need to train men and ladies of our church and nearby churches to work in full-time Christian service.

In 1992, the Golden State Baptist Institute was estab-



**Pastor and Mrs. Trieber**

lished for this purpose. In May of 1995, we were able to witness the first commencement exercises of the Golden State Baptist Institute. Golden State Baptist College is an outgrowth of Golden State Baptist Institute.



**Opening of GSBC  
1996**

In August of 1996, Golden State Baptist College opened her doors to new students. In this inaugural year, we had over 100 full-time students attend our classes. Four years later, we saw many of these students graduate in our first "homegrown" graduating class.

This fall, GSBC will be celebrating her fourteenth year as an independent, fundamental Bible college. Since the foundation of this college, God has poured out His blessing on this school. The main academic building has



**Auditorium Construction  
November 2003**

been completely remodeled and now includes many classrooms, a dating parlor, a racquetball court, a game room, a coffee shop, a 50's-style diner, a modern computer lab, many piano practice rooms, a modern piano lab, a library, and an auditorium for chapel services. Two beautiful dormitories have been added to

our campus. Each of these dorms can house over 200 students. The Cristina Martinez Commons, housing a state-of-the-art gymnasium and a two-story dining hall, was dedicated in 2001.

These facilities are not meant to be admired. They are tools to help prepare students for God's use.

The purpose of Golden State Baptist College is to train men and women who have a sincere desire to serve the Lord by equipping them with the tools necessary for a fruitful ministry.



## ***From the Chancellor***

Dear Student,

When the Lord put Golden State Baptist College in my heart, I dreamed of a college where dedicated students would come to prepare for the Lord's work. Through the years, God has sent us scores of His best young people; and I ask that you earnestly begin praying to determine whether you should join our student body.



Golden State Baptist College provides a great opportunity for those who will be serving our Lord in the 21st century. We have a remarkable group of faculty and staff members who effectively and sacrificially train and teach, and the Lord has given us an unusually attractive campus that helps make college life a joy.

Our school is designed for students who have submissive, tender spirits; students who want to study, listen, and learn; students who want to put their training into action. As a student at Golden State Baptist College, you will have the unparalleled opportunity to be part of North Valley Baptist Church, an incredible church in the heart of the Silicon Valley. Here, you will experience a New Testament church in action; and you will learn that a successful ministry can be built without abandoning the old-time religion.

May our Lord bless you as you seek His will for your life.

God bless you,

Dr. Jack Trieber  
Founder, Chancellor

## ***From the President***

Dear Student,

Golden State Baptist College is a place where hundreds of young people have found purpose in life and experienced the calling of God in a personal way. It is an exciting place where you will find a revival spirit, fervent preaching and evangelistic music. Our competent and experienced teachers have a heart for our students and a love for God



Our Chancellor, Dr. Jack Trieber, is a dynamic leader and a gracious pastor who loves his people deeply. Bro. Trieber personally teaches classes at the college each week and knows our students by name. Golden State Baptist College is a ministry of the North Valley Baptist Church where Bro. Trieber has been the pastor since 1976. Our students enjoy the benefit of being influenced by one of God's choicest servants in a church and college that the Lord has blessed in an unusual way.

If you have a desire for God to use you in His work, I am confident that you will find Golden State Baptist College to be a place that will equip you for His service and challenge you to be all that you can be for the glory of God.

If you have additional questions as you read these pages, please feel free to contact us. It is my prayer that you will consider joining our Golden State Baptist College family in the near future.

Sincerely,

Brad Boruff  
President



# DOCTRINAL STATEMENT

### **The Holy Scriptures**

We believe in the verbal, plenary inspiration of the Holy Scriptures of the Old and New Testaments and that they compose the entire Word of God. The Scriptures are inerrant, infallible, and God-breathed; and therefore, are the final authority for faith and life. The sixty-six books of the Old and New Testaments are the complete and divine revelation of God to man. The Scriptures shall be interpreted according to their normal grammatical-historical meaning. The King James Version of the Bible shall be the official and only English-language translation used by Golden State Baptist College. (II Timothy 3:16-17; II Peter 1:20-21)

### **The Godhead**

We believe in one Triune God, eternally existing in three persons—Father, Son, and Holy Spirit—each coeternal in being, coidentical in nature, co-equal in power and glory, and having the same attributes and perfections. (Deuteronomy 6:4; Matthew 28:19; II Corinthians 13:14; John 14:10, 26)

### **The Person and Work of Christ**

We believe that the Lord Jesus Christ, the eternal Son of God, became man without ceasing to be God, having been begotten by the Holy Spirit and born of the Virgin Mary in order that He might reveal God and redeem sinful men. (Isaiah 7:14; 9:6; Luke 1:35; John 1:1-2, 14; II Corinthians 5:19-21; Galatians 4:4-5; Philippians 2:5-8)

We believe that the Lord Jesus Christ accomplished our redemption through His death on the cross as a representative, vicarious, substitutionary sacrifice; and that our justification is made sure by His literal, physical resurrection from the dead. (Acts 2:18-36; Romans 3:24-25; I Peter 2:24; Ephesians 1:7; I Peter 1:3-5)

We believe that the Lord Jesus Christ ascended to Heaven and is now exalted at the right hand of God where, as our High Priest, He fulfills the ministries of Representative, Intercessor, and Advocate. (Acts 1:9-10; Hebrews 9:24; 7:25; Romans 8:34; I John 2:1-2)

### **The Person and Work of the Holy Spirit**

We believe that the Holy Spirit is a Person Who convicts the world of sin, of righteousness, and of judgment; and that He is the Supernatural Agent in regeneration, baptizing all believers into the body of Christ, indwelling and sealing them unto the day of redemption. (John 16:8-11; Romans 8:9; I Corinthians 12:12-14; II Corinthians 3:6; Ephesians 1:13-14)

We believe that He is the Divine Teacher Who assists believers to understand

and appropriate the Scriptures and that it is the privilege and duty of all the saved to be filled with the Spirit. (Ephesians 1:17-18; 5:18; I John 2:20, 27)

We believe that God is sovereign in the bestowal of spiritual gifts to every believer. God uniquely uses evangelists, pastors, and teachers to equip believers in the assembly in order that they can do the work of the ministry. (Romans 12:3-8; I Corinthians 12:4-11, 28; Ephesians 4:7-12)

We believe that the sign gifts of the Holy Spirit, such as speaking in tongues and the gift of healing, were temporary. We believe that speaking in tongues was never the common or necessary sign of the baptism or filling of the Holy Spirit and that ultimate deliverance of the body from sickness or death awaits the consummation of our salvation in the resurrection, though God frequently chooses to answer the prayers of believers for physical healing. (I Corinthians 1:22; 13:8; 14:21-22)

### **The Fallen Nature of Man**

We believe that man was created in the image and likeness of God, but that in Adam's sin the human race fell, inherited a sinful nature, and became alienated from God; and, that all men are sinners by birth and by choice, and, of themselves, utterly unable to remedy their lost condition. (Genesis 1:26-27; Romans 3:22-23; 5:12; 6:23; Ephesians 2:1-3; 4:17-19)

### **Salvation**

We believe that salvation is the gift of God brought to man by grace and received by personal faith in the Lord Jesus Christ, Whose precious blood was shed on Calvary for the forgiveness of our sins (John 1:12; Ephesians 1:7; 2:8-10; I Peter 1:18-19) and that in order to be saved, sinners must be born again; that the new birth is a new creation in Christ Jesus; that it is instantaneous and not a process.

### **The Eternal Security and Assurance of Believers**

We believe that all the redeemed, once saved, are kept by God's power and are thus secure in Christ forever. (John 6:37-40; 10:27-30; Romans 8:1, 38-39; I Corinthians 1:4-8; I Peter 1:4-5)

We believe that it is the privilege of believers to rejoice in the assurance of



their salvation through the testimony of God's Word which, however, clearly forbids the use of Christian liberty as an occasion to the flesh. (Romans 13:13-14; Galatians 5:13; Titus 2:11-15)

### **The Church**

We believe that the local church, which is the body and the espoused bride of Christ, is solely made up of born-again persons. (I Corinthians 12:12-14; II Corinthians 11:2; Ephesians 1:22-23; 5:25-27)

We believe that the establishment and continuance of local churches is clearly taught and defined in the New Testament Scriptures. (Acts 14:27; 20:17, 28-32; I Timothy 3:1-13; Titus 1:5-11)

We believe in the autonomy of the local church, free of any external authority or control. (Acts 13:1-4; 15:19-31; 20:28; Romans 16:1, 4; I Corinthians 3:9, 16; 5:4-7, 13; I Peter 5:1-4)

We recognize water baptism and the Lord's Supper as the Scriptural ordinances of obedience for the church in this age. (Matthew 28:19-20; Acts 2:41-42; 18:18; I Corinthians 11:23-26)

### **Separation**

We believe that all the saved should live in a manner that does not bring reproach upon their Savior and Lord; and that separation from all religious apostasy, all worldly and sinful pleasures, practices, and associations is commanded of God. (Romans 12:1-2; 14:13; II Corinthians 6:14-7:1; II Timothy 3:1-5; I John 2:15-17; II John 9-11)



### **The Second Advent of Christ**

We believe in that "blessed hope," the personal, imminent return of Christ Who will rapture His Church prior to the seven-year tribulation period. At the end of the Tribulation, Christ will personally and visibly return with His saints to establish His earthly Messianic Kingdom which was promised to the nation of Israel. (Psalm 89:3-4; Daniel 2:31-45; Zechariah 14:4-11; I Thessalonians 1:10; 4:13-18; Titus 2:13; Revelation 3:10; 19:11-16; 20:1-6)

### **The Eternal State**

We believe in the bodily resurrection of all men—the saved to eternal life, and the unsaved to judgment and everlasting punishment. (Matthew 25:46; John 5:28-29; 11:25-26; Revelation 20:5-6, 12-13)

We believe that the souls of the redeemed are at death absent from the body and present with the Lord, where in conscious bliss they await the first resurrection when spirit, soul, and body are reunited to be glorified forever with the Lord. (Luke 23:43; II Corinthians 5:8; Philippians 1:23; 3:21; I Thessalonians 4:16-17; Revelation 20:4-6)

We believe that the souls of unbelievers remain after death in conscious punishment and torment until the second resurrection when, with soul and body reunited, they shall appear at the Great White Throne Judgment and shall be cast into the Lake of Fire, not to be annihilated, but to suffer everlasting conscious punishment and torment. (Matthew 25:41-46; Mark 9:43-48; Luke 16:19-26; II Thessalonians 1:7-9; Jude 6-7; Revelation 20:11-15)

### **The Personality of Satan**

We believe that Satan is a person, the author of sin, and the cause of the fall of man; that he is the open and declared enemy of God and man; and that he shall be eternally punished in the Lake of Fire. (Job 1:6-7; Isaiah 14:12-17; Matthew 4:2-11; 25:41; Revelation 20:10)

### **Creation**

We believe that God created the universe in six literal, 24-hour periods. We reject evolution, the Gap Theory, the Day-Age Theory, and Theistic Evolution as unscriptural theories of origin. (Genesis 1-2; Exodus 20:11)

### **Civil Government**

We believe that God has ordained and created all authority consisting of three basic institutions: (1) the home, (2) the church, and (3) the state. Every person is subject to these authorities, but all (including the authorities themselves) are answerable to God and are governed by His Word. God has given each institution specific Biblical responsibilities and has balanced those responsibilities with the understanding that no institution has the right to infringe upon the other. The home, the church, and the state are equal and sovereign in their respective Biblically assigned spheres of responsibility under God. (Romans 13:1-7; Ephesians 5:22-24; Hebrews 13:17; I Peter 2:13-14)

### **Unchaste Conduct**

We believe that God has commanded that no intimate physical activity be engaged in outside of a marriage between a man and a woman. We believe that any form of homosexuality, lesbianism, bisexuality, bestiality, incest, fornication, adultery, and pornography is a sinful perversion of God's original intent for a physical relationship between a husband and wife. (Genesis 2:24; 19:5, 13; 26:8-9; Leviticus 18:1-30; Romans 1:26-29; I Corinthians 5:1; 6:9; I Thessalonians 4:1-8; Hebrews 13:4)

### **Divorce and Remarriage**

We believe that God hates divorce and intends marriage to last until one of the spouses dies. Although divorced and remarried persons or divorced persons may hold positions of service in a church and be greatly used of God for Christian service, they may not be considered for the offices of pastor or deacon of a church. (Malachi 2:14-17; Matthew 19:3-12; Romans 7:1-3; I Timothy 3:2, 12; Titus 1:6)

### **Abortion**

We believe that human life begins at conception and that the unborn child is a living human being. Abortion constitutes the unjustified, inexcusable taking of unborn human life. Abortion is murder. We reject any teaching that abortions of pregnancies due to rape, incest, birth defects, gender selection, birth or population control, or the mental well-being of the mother are acceptable. (Job 3:16; Psalm 51:5; 139:14-16; Isaiah 44:24; 49:1, 5; Jeremiah 1:5, 20:15-18; Luke 1:44)



### **Missions**

We believe that God has given the church a great commission to proclaim the Gospel to all nations so that there might be a great multitude from every nation, tribe, ethnic group, and language group who believe on the Lord Jesus Christ. As ambassadors of Christ we must use all available means to go to the foreign nations and not wait for them to come to us. (Matthew 28:19-20; Mark 16:15; Luke 24:46-48; John 20:21; Acts 1:8, II Corinthians 5:20)

### **Lawsuits Between Believers**

We believe that Christians are prohibited from bringing civil lawsuits against other Christians or the church to resolve personal disputes. We believe the church possesses all the resources necessary to resolve personal disputes between members. We do believe, however, that a Christian may seek compensation for injuries from another Christian's insurance company as long as the claim is pursued without malice or slander. (I Corinthians 6:1-8; Ephesians 4:31-32)

### **Giving**

We believe that every Christian, as a steward of that portion of God's wealth entrusted to him, is obligated to support his local church financially. We believe that God has established the tithe as a basis for giving, but that

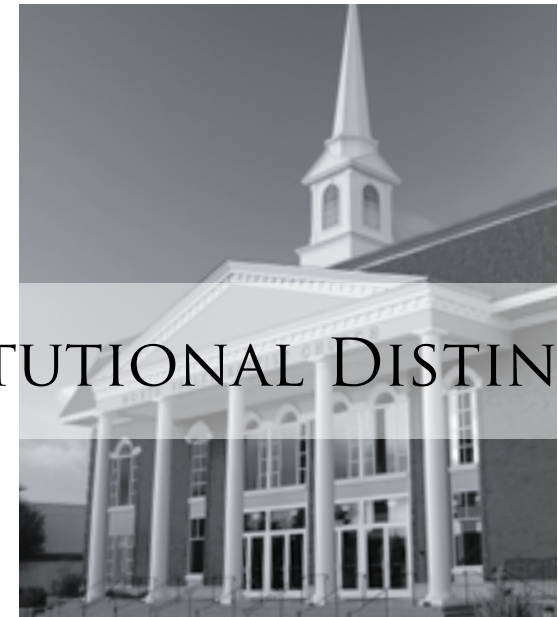


every Christian should also give other offerings sacrificially and cheerfully to the support of the church, the relief of those in need, and the spread of the Gospel. We believe that a Christian relinquishes all rights to direct the use of the tithe or offering once the gift has been made. (Genesis 14:20; Proverbs 3:9-10; Acts 4:34-37; I Corinthians 16:2; II Corinthians 9:6-7; Galatians 6:6; Ephesians 4:28; I

Timothy 5:17-18; I John 3:17)

*This doctrinal statement does not exhaust the extent of our faith. The Bible itself is the sole and final source of all that we believe. We do believe, however, that the foregoing doctrinal statement accurately represents the teaching of the Bible and, therefore, is binding upon all faculty, staff, and students.*

# INSTITUTIONAL DISTINCTIVES



*North Valley Baptist Church Auditorium*

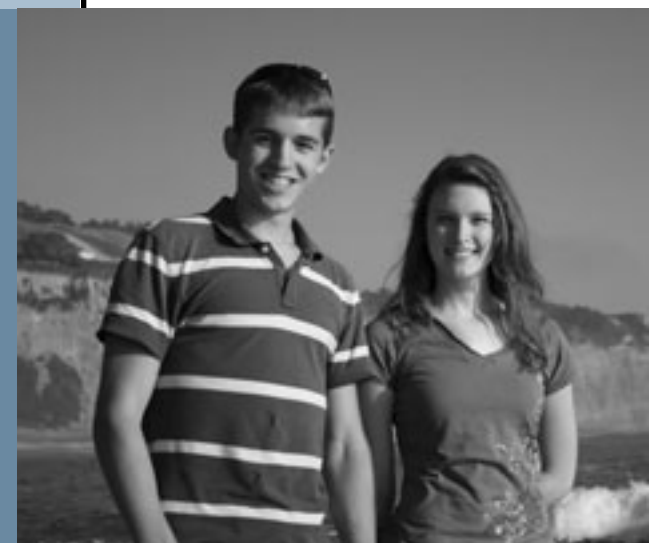
1. Golden State Baptist College is a critically needed ministry. The morals of America's young people are at an all-time low. In our opinion, fundamental, independent Baptist churches are becoming too rare. The need has never been greater to train fundamental, independent Baptist leaders for the next generation. Our college is dedicated to exalting our Lord and Savior, Jesus Christ, rather than men or personalities, and it stands in stark contrast to the atheistic and humanistic approach which characterizes most institutions of higher learning in our country.
2. Golden State Baptist College is unashamedly an independent, fundamental, soul-winning, separated, Baptist college. Thus, Golden State Baptist College is not intended to be merely Baptist. Students who wish to be accepted at Golden State Baptist College must come from a church of like faith and practice. We want to make it very clear to all of our students where we stand; therefore, we will not be able to accept charismatic, "Bible" church, "Christian" church, non-denominational, or inter-denominational students. Our admissions policy is not intended to question the salvation or sincerity of non-Baptist students, but only to make our approach clear and definite.
3. Golden State Baptist College is pro-local church. It is designed to be a blessing and an educational alternative for fundamental, independent college students to consider, and it should not be perceived as a threat to any other pastor or church.
4. The King James Version is the only English-language Bible that will be permitted on campus.
5. Golden State Baptist College is pro-family. We do not believe that any institution should interfere with the God-given responsibility of parenthood. Our college will encourage its students to love, respect, and obey their parents.
6. Golden State Baptist College believes it is a high honor and a great responsibility to train young people, because the formative college years can never be duplicated or undone. For many students, decisions made in college become part of a lifelong direction.
7. Golden State Baptist College will not be a replica of any other college. It is unique and patterned after what God has called us to do.
8. Golden State Baptist College will stand against the destructiveness of

para-church organizations since their infiltration can weaken a local New Testament church.

9. Golden State Baptist College will teach its students more than traditional Baptist history. We believe that independent, fundamental Baptist students should be taught the heritage and history of the independent, fundamental Baptist movement.
10. Golden State Baptist College will stress the importance of preaching, for God has chosen the foolishness of preaching to confound the wise. (I Corinthians 1:17-28)
11. Golden State Baptist College will oppose all forms of ecumenicism.
12. Golden State Baptist College, its doctrines, policies, and finances will be directly accountable to the pastor and to the church members of North Valley Baptist Church. It will not answer to an independent board or to a group of pastors.
13. The deacon board of the North Valley Baptist Church will simultaneously serve as the board of trustees for Golden State Baptist College.

## GSBC's Activities

AT GOLDEN STATE BAPTIST COLLEGE, there are activities on a weekly basis that afford the students a much-needed break from studies and an opportunity to develop their social lives and have some fun. The Activities Staff at Golden State works hard each semester to ensure that there are many different events available to the students. Past



activities have included amateur and professional sports events, school-wide picnics, trips to San Francisco and Monterey, interesting museums, and many appealing restaurants. These are just a few of the many activities that students enjoy throughout the year.



## General Requirements

1. Golden State Baptist College, as a private educational institution, is free to control admission and attendance of students. No person has a right to attend Golden State Baptist College.
2. Attendance at Golden State Baptist College is a privilege, and this privilege may be forfeited by any student who does not conform to its rules and regulations, or who is not willing to adjust himself to its environment.
3. At Golden State Baptist College we are not looking to swell a student body with many young people just because they claim to be Christian. We are looking for an army of sold-out soldiers who are dedicated to the task of pleasing and glorifying God with their lives and bodies. We are not interested in being a reform school.
4. At Golden State Baptist College we desire to work with young people who have a basic foundation in being independent, fundamental Baptists and who are seeking to grow from that point.
5. A brand-new Christian, a babe in Christ, will be encouraged to stay home under his pastor and local church ministry until he grows for a year or two and his pastor feels it is the proper time for him to enroll in Golden State Baptist College.
6. Golden State Baptist College has a general policy of not accepting any students who have been divorced. Any exceptions will be decided on a case-by-case basis by the administration.
7. Applicants must have earned a high school diploma or must have passed the General Educational Development Test (GED).
8. Applicants are required to submit scores from the American College Testing Program test battery. Applicants who cannot take the ACT before enrollment may receive permission from the Director of Admissions to enroll for one semester, provided all the other requirements are met. This test can then be taken during the first semester at GSBC.
9. Married students must be at least 20 years old prior to being enrolled into Golden State Baptist College.
10. The North Valley Baptist Church of Santa Clara, dba North Valley Baptist Schools, dba Golden State Baptist College admits students of any race, color, national and ethnic origin to all the rights, privi-

leges, programs and activities generally accorded or made available to students at the school. It does not discriminate on the basis of race, color, national and ethnic origin in administration of its educational policies or admission policies.

## Applying for Admission

### First-Time Students

1. Obtain an application for admission by writing to:  
Director of Admissions  
Golden State Baptist College  
3520 De La Cruz Boulevard  
Santa Clara, CA 95054  
Or, you may call us toll free at 888 GSBC-4-ME (1-888-472-2463).
2. Complete the application and attach a recent photo.
3. Mail the application to the college along with a \$40 application fee which is non-refundable.
4. Give the pastor's reference form to your pastor and ask him to mail it directly to the college. If your pastor is related to you, then the pastor's reference should be given to an assistant pastor, youth pastor, Christian school principal, deacon chairman, or similar individual.
5. Give the two other reference forms to individuals who are not relatives and ask them to return them directly to the college.
6. Ask the high school which you attended to send a copy of your transcript directly to the Director of Admissions. If, in lieu of a high school diploma, you have received a GED, please have an official copy of the results sent directly to the Director of Admissions, along with your high school transcripts.
7. Request that your ACT test scores be sent to the Director of Admissions as soon as possible. A copy of your scores will be sent to us when you use our ACT code. The ACT code for Golden State Baptist College is 0281.
8. Complete the form regarding



your health and medical history.

9. After we have received the information listed above, we will notify you of your status in writing.
10. You should feel free to contact the Admissions Office at Golden State at any time to ask questions about the status of your application, procedures for enrollment, or any other questions about our college. Call us on our toll-free line, 888 GSBC-4-ME (1-888-472-2463).

Note: Applications will be accepted only from prospective students who are at least juniors in high school.

### Transfer Students

1. Complete all steps for First-Time Students.
2. If you have attended any other colleges we must receive transcripts from all of the colleges or institutions you have attended. This would be true even if you did not wish to transfer credit from other schools to Golden State. Other institutions should send the transcript directly to:  
Director of Admissions  
Golden State Baptist College  
3520 De La Cruz Boulevard  
Santa Clara, CA 95054
3. Golden State Baptist College must be informed if there are any unpaid accounts with any other schools.
4. Notification of your status will be provided in writing upon receipt of the above information.

### Transfer of Credit (accepting credit)

GSBC will accept credit from other colleges subject to administrative approval. The maximum amount of credits that can be transferred is sixty-four credit hours. The administration maintains the right to deny acceptance of



any credits it deems unsatisfactory or inadequate toward the completion of a degree at Golden State Baptist College.

Credit may be given for all subjects which are equivalent to those courses offered at GSBC, and in which a grade of "C" or better was earned.

### Processing of Application

Normally, an application will require at least three weeks to be processed, and in many cases, up to six weeks or longer. All information including transcripts, references, and the application fee should be sent in as quickly as possible so a final letter of acceptance can be given.

### Registration Fee

Following an applicant's acceptance, a non-refundable registration fee of \$300 should be sent to the Financial Office. This fee should be paid as soon as possible to ensure placement in the college but must be paid no later than registration day. All paid registrations need to be applied within 1 year. (For example, a registration fee paid in the fall of 2008 needs to be applied by fall of 2009.) This registration fee will be reduced to \$150 if it is paid prior to the end of the current semester for returning students. New students will be given a \$150 discount until July 31 for the fall semester and December

## GSBC's Academics

GOLDEN STATE BAPTIST COLLEGE OFFERS a strong academic program that is designed to help young people know not only what they believe but also why they believe it. The course requirements for each class reflect Dr. Trieber's vision for the students to know how to communicate well. Our curriculum encourages advancement in writing, creative thinking and public speaking. Our faculty is a group of experienced, knowledgeable, and gifted communicators who take a personal interest in the students and desire to help prepare them to minister to others.



31 for the spring semester. Once this fee has been paid, new and returning students may then register for classes on a first-come, first-served basis.

### **Placement Tests**

Students may take placement tests to exempt them from General Math, Fundamentals of Music, Computer Basics, or Beginning Typing. If they pass these tests, they will not receive credit for the course, but will be allowed to substitute an elective. Students who wish to take these tests must do so before the end of their fourth semester of attendance at Golden State Baptist College. If a student has transferred enough credits so that he will be enrolled for four or fewer semesters at Golden State Baptist College, then he must complete the tests by before the end of his next to last semester at GSBC.

#### **English Placement Test**

All incoming freshmen are required to take an English placement test during registration. This test assures proper placement in freshman English. Those students who do not score satisfactorily must enroll in Basic English (EN99). Advanced students may test out of Grammar and Composition I (EN101) and II (EN102) and take electives in their place.

#### **Mathematics Placement Test**

Students who are required to take General Mathematics (MA 101) may take a math placement test during registration. Those students who score satisfactorily will not be required to enroll in General Mathematics and may take an elective in its place. All student who have a major in elementary education are required to take the General Mathematics Placement Exam during their first year of studies at GSBC.

#### **Fundamentals of Music Placement Test**

This test is a prerequisite for most music courses and must be taken by students majoring in music to determine whether the student should enroll in MU 98 or whether the student may be excused from this course.

#### **Keyboarding Placement Test**

A keyboarding proficiency exam must be taken during registration for proper placement into typewriting classes. Those students who score satisfactorily will fulfill the typing requirement and may take an elective in its place.

#### **Music Auditions**

During registration, the music faculty will audition students who wish to enroll in private music lessons. Enrollment in private lessons is a privilege and will be allowed only if permission is granted by a member of the music faculty.

## FREQUENTLY ASKED QUESTIONS



*Clock Tower Fountain*

## **What Athletic Opportunities Do Students Have?**

### **Intramural Sports**

The students enjoy a wide-ranging intramural sports program for men and ladies throughout both semesters. Seven different sports are offered throughout the course of the year, with hundreds of different students participating in these leagues. The action is fun and highly competitive. In the fall semester, the entire student body is dismissed from classes to watch the annual Turkey Bowl flag football championship. During the spring semester, the gym is packed for the basketball championship game. Other sports include volleyball, indoor soccer, dodgeball, and more.



### **May I Bring My Automobile?**

Students who wish to operate an automobile on or around the campus must notify the college office at the beginning of each semester. They must provide a valid driver's license, proof of insurance, and valid license and registration for the automobile. All state laws must be obeyed in the operation of the vehicle. Students must notify the administration and their parents in the event of any accidents or traffic violations. Though not against the rules, it is strongly advised that freshmen students not have automobiles on campus. The college reserves the right to deny any student the privilege of operating an automobile on campus if its use is considered to be detrimental in any way to the student's proper education or well-being.

### **What Does Campus Life Entail?**

We believe that the activities on campus, the dormitory life, and the entire program of the college require the full participation and cooperation of every student. College is always a wonderful experience for those who are involved and dedicated to the college program.

## **How Can I Participate in the Music Program?**

A school choir is available for those who wish to enroll.

Students are also given the opportunity to sing in chapel. Students are encouraged to create and practice with their own music groups.



### **What Opportunities Do I Have for Christian Service?**

Students are given the opportunity to teach Sunday school classes, work on bus routes, participate in the music ministry, etc. Each of these opportunities is under administrative supervision.

### **May I Attend My Home Church?**

Every student must attend North Valley Baptist Church of Santa Clara. A student who is an active member of another local, fundamental Baptist church in this area prior to his acceptance at GSBC must first obtain special administrative approval in order to attend his home church while enrolled at GSBC.

### **When Does GSBC Have Chapel Services?**

Chapel begins each weekday at 11:00 a.m. Attendance at chapel is required. Preachers and missionaries from across the nation and around the world as well as members of our faculty will preach from the platform of Golden State Baptist College.

### **May I Date While on Campus?**

Students are encouraged to date while at GSBC. Dating couples are given the opportunity to utilize the dating parlor during scheduled hours.

## ***Is There a Demerit System?***

Golden State Baptist College uses a demerit system for disciplinary measures. Each week the demerit list will be published. Parents receive information regarding demerits every semester.

## ***What Are the Dormitory Requirements?***

Golden State Baptist College requires all single young men and young women to live in the dormitories for their freshman year. After this, sophomores, juniors and seniors may live at home with their parents. All students will need to carry a minimum course load of 12 hours in order to live in the dormitories.



Each student is expected to furnish linens, pillow, bedspread, and blankets for a single bed. Each student should have an iron. Appliances such as televisions, hot plates, and electric skillets are not permitted. Radios, lamps, fans, sewing machines, computers, hair dryers,

## **GSBC's Chapel**

CHAPEL IS THE HEARTBEAT of everything that happens at Golden State Baptist College and the highlight of daily campus life. There is always a great deal of excitement about the chapel services as we look forward with anticipation to what God has in store for us. Every day the students enjoy singing, giving testimonies, and hearing the preaching of the Word of God. We are privileged to hear great men of God from across the country and around the world as well and our own staff and faculty. Each Wednesday is an extra special treat as our chancellor, Dr. Jack Trieber, comes to chapel and encourages us to live for the Lord and choose the ministry. Many decisions are made and lives are changed as a result of what God does in and through the chapel services.



and electric razors may be used in the dormitories. Students are welcome to bring some items to decorate their rooms to make them comfortable. The administration reserves the right to require students to remove decorations that are not in compliance with the philosophy of this college.

## ***Are Meals Provided?***

Delicious, nutritious meals are prepared and provided for all dormitory students.

## ***Are There Places to Eat and Fellowship While on Campus?***

The Golden Grille, our on-campus snack shop, and the Java Junction, our on-campus coffee shop, are open at published times for students to enjoy food and fellowship together.

## ***Are Students Required to Have Hospitalization Insurance?***

Students are encouraged, but not required, to have hospitalization and medical insurance. Many students have this insurance provided to them through their employers. Others choose to purchase private insurance through a private carrier. The college does not provide this insurance.



## ***What Are the Rules Concerning Outside Employment?***

Students who wish to have outside employment must receive approval from the administration. No dorm student will be allowed to work or be off campus between the hours of 1:00 a.m. and 6:00 a.m.

## ***What Types of Socials and Activities Are There?***

Each week there is a college-wide activity to a different location. Activities can involve professional and NCAA sporting events, BBQs, picnics and attractions within the Bay Area. In addition to weekly activities, the college hosts a banquet each semester, as well as periodic music recitals provided for the students.

## ***When Will I Go Soul Winning?***

Students are required to be involved in a soul-winning ministry each week. Golden State Baptist College students are expected to go soul winning for a minimum of three hours each week.

### ***When Will I Study?***

Students are required to study each weekday evening from 7:00 to 9:00 p.m. in their dormitory rooms or in the main academic building, with the exception of Wednesday evening for the mid-week service, approved work schedules, and special college-directed activities.

### ***How Can I Request A Copy of My Transcript?***

All transcript requests must be submitted in writing with the student's signature. Requests may not be submitted over the telephone or by another person (unless you have written authorization from that student). Transcripts will not be issued if the Finance Office shows a balance due. Official copies will be sent directly to the place or person designated. Unofficial copies will be given or sent directly to the person requesting it. There will be a \$10 fee for each transcript requested unless the person is currently enrolled. Students who are currently enrolled may receive one unofficial transcript per semester at no charge. Mail your requests to the Records Office in care of Golden State Baptist College.

*This catalog reflects the college's best efforts to provide accurate information for students at the time of its publication. It does not, however, constitute a contract between Golden State Baptist College and its students. Certain modifications may be necessary after publication because of unforeseen circumstances.*



## Fees

### **Application Fee ..... \$40.00**

This non-refundable fee must accompany every application.

### **Registration Fee ..... \$300.00**

The registration fee should be sent to the Financial Office when you receive your written notice of acceptance to Golden State Baptist College. This fee should be paid as soon as possible to ensure placement in the college but must be paid no later than registration day. A late fee of \$125.00 will be applied to all students who fail to complete the registration process and who fail to pay the registration fee by the close of registration day. The registration fee begins at the \$125 rate and increases \$5 per week beginning the first week of February continues through July 31. Beginning August 1, the fee is \$300. A weekly schedule is available on the college website. For returning students the fee will be reduced to \$150.00 if it is paid prior to the end of the current semester. Once this fee has been paid, new and returning students may then register for classes on a first-come, first-served basis. This fee will be reduced by 50% per semester if the student is taking 8 or fewer credits.

### **Late Registration Fee ..... \$125.00**

There is a \$125.00 charge for students registering after registration day at the beginning of each semester.

### **Tuition ..... \$2,300.00**

Students will be charged this tuition fee each semester for a course load of 9-17 hours. Students taking more than 17 hours in a semester will be charged an additional fee of \$140.00 for each hour in excess of 17 hours. Students taking less than 9 credit hours in a semester will be charged \$260.00 per credit hour.

### **Student Activity Fee ..... \$110.00**

This fee, due each semester, will be used for activities provided by the college for the students. This fee will be \$35.00 per semester if the student is taking 8 or fewer credits.

### **Automobile Fee ..... \$45.00**

This fee, due each semester, provides the student with a parking permit for his vehicle. Proof of insurance and vehicle registration must accompany the application for a parking permit.

### **Room and Board ..... \$2,000.00**

This charge, due each semester, includes a dormitory room and all meals for students living on campus.

### **Graduation Fee ..... \$135.00**

Every graduating senior will be charged this fee at the beginning of his last semester before graduation.

### **Private Music Lessons ..... \$175.00**

This fee will be charged every semester for students taking private music lessons.

### **Computer Course Fee ..... \$75.00**

This fee will be charged every semester for each course taken that uses the computer lab.

### **Computer Lab Fee ..... \$60.00**

This fee is charged for use of the computer lab. Students must pay this fee to use any computers in the computer lab.

### **Yearbook Fee ..... \$50.00**

Every student (full-time and part-time) pays this annual fee.

### **Transcript Requests Fee ..... \$10.00**

Student needing to send a transcript to a school or person pay this fee.

### **ACT Testing Administration Fee ..... \$65.00**

This fee is for those students who have not taken the ACT test and will be taking the test on the GSBC campus. This test will be administered once per semester.

## **Summary of Expenses**

### **Dormitory Students**

	<b>Yearly</b>	<b>Semester</b>
Activity Fee	\$220.00	\$110.00
Registration Fee	\$600.00	\$300.00
Tuition	\$4,600.00	\$2,300.00
Room and Board	\$4,000.00	\$2,000.00
<i>Total</i>	<i>\$9,420.00</i>	<i>\$4,710.00</i>

Note: Graduation fees, automobile fees, etc., are assessed only to those to whom they apply.

### **Off-Campus Students**

	<b>Yearly</b>	<b>Semester</b>
Activity Fee	\$220.00	\$110.00
Registration Fee	\$600.00	\$300.00
Tuition	\$4,600.00	\$2,300.00
<i>Total</i>	<i>\$5,420.00</i>	<i>\$2,710.00</i>

All fees, as well as tuition and room and board, are subject to change if necessary.

## **How Do I Pay My Bill?**

The full tuition and room and board can be paid in full upon enrolling. Students who wish to make installment payments must pay 20% of their semester charges on registration day. This will be the first of five equal payments which must be paid over the semester. Additional fees will be paid throughout the semester according to the student handbook.



A two-week grace period is provided for any student who is struggling with his bill. A student will be withdrawn from classes after this if his bill is not paid.

A student who is behind in his bill will be permitted to stay on campus for seven days after he is withdrawn from classes if he is working to pay the balance on his bill.

### **Returned Check Fee**

Students will be charged \$15.00 for a returned check. This applies to any ministry or organization of the college (e.g., campus bookstore, Business Office, college cafeteria, etc.). A second returned check will result in a \$25.00 charge.

No checks will be accepted as payment after two checks have been returned by the bank. Payments will then need to be paid in cash or by money order.

### **Holiday Fee**

The Christmas holiday is not included in the regular room and board fees. Thus, for each day a student is on campus during the Christmas break, a per day charge will be assessed.

### **Books**

Students will also be responsible for purchasing books for their classes. The number and price of these books will vary according to the courses taken.

### **Auditing of Classes**

Approved students may audit classes at the rate of \$130.00 per credit hour.

### **Financial Obligations for Withdrawal**

Any student who is expelled or who withdraws, for any reason, must pay

the full amount of the tuition, fees, and room and board which was due on or before the date the student withdrew or was expelled.

If upon withdrawal, a student has already paid more than the above prescribed amounts, a refund of tuition, fees, and room and board will be provided to him for the amount of overpayment. There are no other provisions for refunds for students who withdraw or are expelled.

## **Scholarships**

### **Academic Scholarship**



Students who graduate as salutatorian or valedictorian from a Christian school may apply for this scholarship. Students who have a minimum composite score of 25 on the ACT or 1140 on the SAT will also qualify for this scholarship. An official copy of the ACT or SAT must be sent directly to the college. In order for the student to qualify for the salutatorian or valedictorian portion of this scholarship, there must be at least five students in his graduating class. If the scholarship is awarded, the student will receive one semester's tuition free. Students who are eligible for this scholarship may not receive the Full-Time Christian Service Scholarship or the First GSBC Student Scholarship. This scholarship is only available during the student's first semester of enrollment at GSBC.

### **Family Scholarship**

If a husband is paying as a full-time student, his wife may take one course (up to five credits) at no charge. She would be subject to all of the college rules and demerit system. If a husband is paying as a full-time student, his wife may take additional courses at half of the regular cost. If she is taking nine or more credits, she will pay 50% of the regular semester tuition. If she is taking less than 9 credits, the fee charged will be for any credits in addition to the tuition-free course. If she is taking two or more classes, and the total number of credits she is taking is less than 9, the class with the greatest number of credits will be the one that is tuition-free.



### **First GSBC Student Scholarship**

The first student to attend GSBC from a particular church will receive a \$500 credit towards the first payment. If this applies to more than one student from the same church in one semester, all are eligible for this scholarship. This scholarship may also be earned by students who receive the Pastors' Children's Scholarship and the Missionary Scholarship. This scholarship is only available during the student's first semester of enrollment at GSBC.

### **Freedom Scholarship**

The tuition is reduced 50% for students whose major is pastoral theology, pastoral assistant or missions and who have served our country in active military duty and have been honorably discharged. If applying for this scholarship, students will need to provide a copy of the DD214 that was issued to them upon discharge.

### **Full-Time Christian Service Scholarship**

Students who have a parent in full-time Christian service are eligible for this scholarship. A credit of \$500 will be applied to the first payment. Students who are eligible for this scholarship may not receive the First GSBC Student Scholarship. This scholarship is only available during the student's first semester of enrollment at GSBC.



### **Missionary Scholarship**

This applies to students whose parents are presently missionaries outside of the United States. The tuition is reduced by 50% for young ladies and 25% for young men. If missionaries' children also qualify for the Valedictorian/Salutatorian Scholarship, they will receive the Valedictorian/Salutatorian Scholarship their first semester; and the Missionary Scholarship in all subsequent semesters.

### **Pastors' Children's Scholarship**

Pastors' children can apply for a pastors' children's scholarship. The tuition is reduced 50% for young ladies and 25% for young men. If pastors' children also qualify for the Valedictorian/Salutatorian Scholarship, they will receive the academic scholarship their first semester; and the Pastor's Children's Scholarship in all subsequent semesters.



*Campus Library*

## Degrees Offered

All degrees awarded by Golden State Baptist College will be a Bachelor of Ministry degree with a major in Bible. Students will generally have a second major, which may be selected from those listed on the following pages. GSBC offers a Bachelor of Ministry degree in the following majors.

### General Studies

This course of study is for students who are unsure of a particular calling or who simply want a solid, general Bible college education. Students will be equipped with a sound education and well-established principles. Those completing this prescribed course will receive a Bachelor of Ministry degree.

### Elementary Education

This major is for ladies who plan to teach in the Christian school on the elementary grade level. Upon completion of this course of study, students will receive a Bachelor of Ministry degree.

### Secondary Education

This prescribed course is for students who wish to teach on the junior high or high school level in the Christian school. Secondary education majors are required to select two teaching fields comprised of 22 hours each. Upon completion of this course of study, the degree of Bachelor of Ministry is awarded.

### Missions

Students who feel the call of God to go to the mission field should consider this course of study. It is designed to train and equip the missionary candidate with the proper tools necessary for working on the mission field. Upon completion of this course, the student will receive a Bachelor of Ministry degree with a major in Missions.

### Pastoral Theology

This course of study is for men who feel God has called them to preach and who are considering pastoring a church. An appropriate balance between academic, spiritual, and ministry-related courses has been put together in order to assure the student the best possible education. Add to this the example and influence of



the North Valley Baptist Church, and you have a tremendously effective course of study. Upon completion of this course, the degree of Bachelor of Ministry will be awarded.

### Pastoral Assistant

This course is prescribed for men who want to pursue the position of assistant pastor, youth director, bus director, music director or a similar ministry in the local church. Students who select this course of study must choose one of the following fields of specialty, requiring a minimum of 16 hours: Church Ministry, Music Ministry, or Education. Upon completion of this course, the degree of Bachelor of Ministry will be awarded.



### Music Education

The music department of Golden State Baptist College is designed to impart practical musical skills to dedicated musicians who will serve the Lord in independent, fundamental Baptist churches and schools. Upon completion of this course of study, the degree of Bachelor of Ministry will be awarded.

### Secretarial Science

This course of study is designed to train ladies for full-time Christian service as secretaries. This is a full four-year program, and, upon completion, a Bachelor of Ministry degree will be awarded.

## Two-Year Degrees

### Associate of Church Ministry (Pastoral) (Men)

This course of study is designed for men who have a desire to work in the ministry as a second man. Upon completion of this course of study, the degree Associate of Church Ministry is awarded. To enter this program, men must be at least 20 years of age and graduating no earlier than the age of 22.

### Associate of Church Ministry (General)

This course of study is designed for men & women who have a desire to work in the ministry. Upon completion of this course of study, the degree Associate of Ministry is awarded.

### Associate of Church Ministry (Secretarial Science) (Ladies)

This course of study is designed for ladies who want to receive practical training as a church or Christian school secretary. Upon completion of this course of study, the degree Associate of Ministry with a major in Secretarial

Science is awarded.

### **Master of Ministries Program**

Golden State Baptist College now offers two closely related master's programs. These exciting programs enable the student to earn a master's degree with 32 credits in one year of study.

### **Master of Ecclesiology**

The Master of Ecclesiology is offered for men and focuses on the establishment of local churches, church growth, and world evangelism. Classes meet four days per week, one of which is dedicated entirely to guest lecturers from all over America who have a wealth of experience and knowledge in planting, building, and serving local churches. This program offers the student the unique experience of spending time with great men of God who have given their lives to the ministry. Along with pastors and missionaries, there are also several guest lecturers who will deal with specialized fields including legal issues, financial planning for churches, and administering a Christian school.

### **Master of Church Ministries**

The Master of Church Ministries is offered for ladies and is specially tailored to prepare them for ministry in the church and Christian school. Like the Master of Ecclesiology degree, this program has guest lecturers on a regular basis. Students in the Church Ministries track will also choose a concentration in business, elementary education, or secondary education.



### **Classification of Students**

#### **Regular/Part-Time Student**

Fewer than 12 hours qualifies a student as part-time; maintaining 12 hours or more identifies a student as full-time.

### **Class Standings**

#### **Freshman**

A freshman is a student who has completed fewer than 28 hours.

#### **Sophomore**

A sophomore is a student who has completed at least 28 hours, but fewer than 60 hours.

#### **Junior**



A junior is a student who has completed at least 60 hours, but fewer than 94 hours.

#### **Senior**

A senior is a student who has completed at least 94 hours.

### **Attendance**

Regular and punctual attendance to classes is expected of all students at Golden State Baptist College. The student alone assumes responsibility for all absences. A student who presents the instructor with an adequate and documented reason for an absence normally will be given an opportunity to make up the work missed.

### **Course Information**

#### **Schedule Changes**

All schedule changes are subject to a change fee.

#### **Dropping/Adding Classes**

A student may drop or add courses during the first full week of classes if approval is granted by the Registrar. If during the first five weeks of classes a student wishes to withdraw, he will receive a "W" and his grade will not be considered in his grade point average or his hours attempted. Any withdrawals after this five-week period will result in the student receiving an "F" for the course, unless special permission has been granted by the Registrar. GSBC will notify parents when a dorm student or a local student who is living with his parents is failing or dropping a class.

#### **Repetition of a Course**

If a student fails a course, or if his final grade is below the minimum requirements for graduation in his major, he may repeat that course. Though all of his grades will be permanently recorded, if the student passes the class the second time, that new grade will be computed into his grade point average along with his first grade.

#### **Numbering of Courses**

Freshmen courses are generally numbered from 100-199.  
Sophomore courses are generally numbered from 200-299.  
Junior courses are generally numbered from 300-399.  
Senior courses are generally numbered from 400-499.

### **Loss of Credit**

Students will begin to lose credit if they do not obtain a four-year degree within six years. Credits that are six years old will not be applied to a degree at Golden State Baptist College, nor will they be included or calculated into the student's final grade point average. There may be extreme circumstances such as illness in which express permission may be granted to extend the six-year requirement.

### Grading System

Grades will be issued at midterm and after final examinations, though midterm grades will not be entered on the student's permanent record. Both the students and parents of dorm students and of local students living with their parents will be notified of these grades.

The college utilizes a 4.00 grading system. The grading system is as follows:

		<i>Grade points</i>
A+		4.3
A	Superior	4.0
A-		3.7
B+		3.3
B	Above Average	3.0
B-		2.7
C+		2.3
C	Average	2.0
C-		1.7
D+		1.3
D	Passing	1.0
D-		0.7
F	Failure	0.0
I	Incomplete	0.0
WF	Withdrawn after deadline	0.0
W	Withdrawn from course	
AU	Audit	
NR	Not reported	
P	Passed	

A student's grade point average may be determined by dividing the total number of grade points earned by the total number of hours attempted.

A student must attain a final grade point average of 2.00 or higher in order to satisfy the grade point requirement for graduation.

Students who get an "I" will have the following four calendar weeks to finish their work, unless an extension has been granted by the administration. If

the work is not completed, the grade will be changed to an "F"

### Academic Probation

Students must make progress towards a degree. Students who consistently have low grades and who are not making academic progress may be denied the opportunity to re-enroll at Golden State Baptist College.

### Withdrawal from the College

A student who wishes to withdraw from the college must file a withdrawal form with the Registrar stating his reasons for withdrawal. Students who withdraw without approval or who are dismissed for disciplinary reasons will automatically receive the grade of "F" in all courses. The effective date of withdrawal will be the date signatures are affixed by college officials. Calculation of any refunds due is based on that date. GSBC will notify the parents and the home pastor when a dorm student or a local student who is living with his parents is expelled from the college.

### Scholastic Honors

The Registrar's Office will publish two academic lists for each semester. A student must be a full-time student and can not have any "Incompletes," "D's," or "F's" for that semester in order to qualify for these honors.



#### President's List

This list will include those students who achieve a grade point average of 4.00 for the semester grading period.

#### Dean's List

This list will include those students who achieve a grade point average of 3.5 or higher for the semester grading period.

### Two-Year Degree Criteria

1. Fulfill the 64-credit requirement published for the major and be approved for graduation by the appropriate academic adviser.
2. Earn at least a 2.0 grade point average at Golden State Baptist College.
3. Complete at least two semesters in residence at Golden State Baptist College, including the last two semesters of study.
4. Settle all financial obligations to the college.
5. Attend commencement activities if enrolled in the spring semester.

6. No student may march lacking any courses.

## Graduation Requirements

### Bachelor of Ministry Degree Criteria:

1. Complete at least 128 hours, including the courses required for the student's chosen degree.
2. Earn at least a 2.00 grade point average at Golden State Baptist College.
3. Receive at least a "C" in every course that is required only in the student's major field.
4. Complete at least four semesters in residence at Golden State Baptist College, including both semesters of the student's senior year.
5. Complete at least 24 hours of Bible at Golden State Baptist College. Those students who transfer credits from another college must complete at least 12 hours of Bible at GSBC.
6. Complete a Petition for Graduation in the Records Office at least 60 days prior to graduation.
7. Settle all financial obligations to the college.
8. Attend commencement activities if enrolled in the spring semester.
9. No one may plan to march lacking any courses. Each student should plan his academic load so that he will finish all required work before graduation.
10. If a student does not receive a satisfactory grade in one classroom course during the spring semester before the graduation in May, he will be allowed to march, but he will not receive a diploma. Before marching, he must sign a form promising to finish that course the summer immediately following graduation and must outline his plan to do so.
11. If a student receives an unsatisfactory grade in more than one subject during the final spring semester, he will not be allowed to march. The student would probably be notified of this about seven to ten days before graduation.
12. Any correspondence work must be completed and the grade submitted to the Academic Office at least three weeks before graduation. If the grade is not received by that time, the student will not be allowed

to march. If the student receives a "D" or "F" in a correspondence course, he will not be allowed to march.

13. In order to march in graduation, a student must have at least a 1.90 GPA at the end of the fall semester. Then, he must have a 2.00 GPA at the end of the spring semester, or have a GPA high enough that it can be raised to a 2.00 by completing four credits in summer school with a 3.30 average.
14. Students may receive diplomas only for majors they have declared. In order to declare a major, students must be in good standing; and they may not declare a major retroactively. In order to receive a diploma from Golden State Baptist College, students must be in good standing at the time the diploma is issued.



### Master's Degree Criteria:

1. Complete at least 32 credits, including the courses required for the student's chosen degree.
2. Earn at least a 3.00 grade point average at Golden State Baptist College.

### Credit Limitations

1. A student must complete 33 of his final 36 hours in classroom work at the college. That is, correspondence work or courses taken at other colleges may count for no more than 3 of the student's final 36 hours.
2. GSBC will not accept more than 6 credits earned by correspondence or an online course after a student has begun working toward a degree from GSBC. A student must receive at least a "C" on correspondence or online courses for those credits to transfer to Golden State. Grades on correspondence courses do not apply to the student's GPA.
3. A student may not earn more than 20 credits in a semester. This would include classes in which he is enrolled or tutored courses. This does not include correspondence.
4. A student may not earn more than 18 credits in a summer. This would

include correspondence courses, tutored courses, summer school, transfer courses—everything.



5. In order to count a correspondence course or tutored course as having been completed in the summer, much of the work must be done in the summer; and the grade must be received at GSBC no later than three weeks after the first day of registration for the fall semester.
6. In order to count a correspondence course or tutored course as having been completed in the fall, much of the work must be done in the fall; and the grade must be received at GSBC no later than three weeks after the first day of registration for the spring semester.
7. In order to count a correspondence course or tutored course as having been completed in the spring, much of the work must be done in the spring; and the grade must be received at GSBC no later than three weeks after graduation day (unless point four above applies).

### **No Three-Year Degrees**

In order to receive a degree from Golden State Baptist College, a student must enroll as a full-time student in at least 7 regular spring or fall semesters of classes at GSBC and complete these semesters. There is no requirement as to how many credits the student must pass each semester, but he must enroll in at least twelve credits and must complete the semester. If a student transfers at least 16 credits to GSBC, prior to beginning GSBC; or if a student begins GSBC after his 20th birthday; then this requirement will be reduced to 6 regular spring or fall semesters. If a student transfers at least 48 credits to GSBC, prior to beginning GSBC; or if a student begins GSBC after his 22nd birthday, then this rule will not apply.

### **Graduation Honors**

Students receiving bachelor's degrees who maintain a high academic average at Golden State Baptist College will graduate with honors as follows:

Cum Laude	3.50–3.69 grade point average
<b>[48]</b> Magna cum Laude	3.70–3.84 grade point average
Summa cum Laude	3.85–4.00 grade point average



# DEGREE REQUIREMENTS

## General Studies Major (Ladies)

This major is for the student who is unsure of a particular calling or who simply wants a solid, general Bible college education. The student will be equipped with a sound education and well-established principles. Those completing this prescribed course will receive a Bachelor of Ministry degree.

<b>Freshman First Semester</b>		<b>Second Semester</b>	
Old Testament Survey	3	New Testament Survey	3
Grammar & Composition I	3	Grammar & Composition II	3
Personal Evangelism	2	Computer Basics	2
Beginning Keyboarding	2	Bible	3
Bible	3	Elective	5
Introduction to Student Life	1		
Elective	2		
<hr/>		<hr/>	
	16		16

<b>Sophomore First Semester</b>		<b>Second Semester</b>	
United States History I	3	Electives	8
Grammar & Composition III	3	Professional Communication	2
General Mathematics	0	General Science	3
Baptist History I	2	Bible	3
Bible Doctrines I	3		
Electives	5		
<hr/>		<hr/>	
	16		16

<b>Junior First Semester</b>		<b>Second Semester</b>	
Bible	3	Bible	3
Philosophy of Music	2	Electives	11
Electives	11	Fundamentals of Music	2
<hr/>		<hr/>	
	16		16

<b>Senior First Semester</b>		<b>Second Semester</b>	
Bible	3	Bible	3
General Psychology	2	Electives	13
Christian Womanhood	2		
Electives	9		
<hr/>		<hr/>	
	16		16

## General Studies Major (Men)

This major is for the student who is unsure of a particular calling or who simply wants a solid, general Bible college education. The student will be equipped with a sound education and well-established principles. Those completing this prescribed course will receive a Bachelor of Ministry degree.

<b>Freshman First Semester</b>		<b>Second Semester</b>	
Old Testament Survey	3	New Testament Survey	3
Grammar & Composition I	3	Grammar & Composition II	3
Personal Evangelism	2	Computer Basics	2
Beginning Keyboarding	2	Church Education	3
Bible	2	Bible	3
Introduction to Student Life	1	Electives	2
Church Education	3		
<hr/>		<hr/>	
	16		16

<b>Sophomore First Semester</b>		<b>Second Semester</b>	
United States History	3	Electives	2
General Mathematics	0	Professional Communication	2
Grammar & Composition III	3	Baptist History II	2
Baptist History I	2	Romans	3
Bible	2	Church Education	3
Church Education	3	Bible Doctrines II	3
Bible Doctrines I	3		
<hr/>		<hr/>	
	16		15

<b>Junior First Semester</b>		<b>Second Semester</b>	
Bible	5	Bible	3
Pastoral Assistant Electives*	5	Pastoral Assistant Electives*	6
Philosophy of Music	2	Epistles**	2
Contemporary Theology	2	The Local Church	3
Electives	2	Fundamentals of Music	2
		Electives	1
<hr/>		<hr/>	
	16		17

<b>Senior First Semester</b>		<b>Second Semester</b>	
Bible	3	Bible	3
Pastoral Assistant Electives*	4	Pastoral Assistant Electives*	5
The Home	2	Proverbs	2
Prayer	2	Daniel and Revelation	3
General Science	3	Electives	3
General Psychology	2		
<hr/>		<hr/>	
	16		16

\*Pastoral Assistant Electives are located on page 66 under Pastoral Assistant Fields of Specialty.

\*\*The student may take either General Epistles (BI 305) or Pastoral Epistles (BI 306).

## Elementary Education Major

This major is for students who plan to teach in the Christian school on the elementary grade level. This course of study is for female students only, and, upon completion, they will receive a Bachelor of Ministry degree.

<b>Freshman First Semester</b>		<b>Second Semester</b>	
Old Testament Survey	3	New Testament Survey	3
Grammar & Composition I	3	Grammar & Composition II	3
Introduction to Student Life	1	Computer Basics	2
Personal Evangelism	2	Bible	6
Beginning Keyboarding	2	Analytical Reading & Reasoning	2
Bible	3	General Math	0
Introduction to Education	2		
<hr/>		<hr/>	
	16		16

<b>Sophomore First Semester</b>		<b>Second Semester</b>	
United States History I	3	United States History II	3
Tests and Measurements	2	Bible	3
Grammar & Composition III	3	Professional Communication	2
Baptist History I	2	General Science	3
Bible Doctrines I	3	General Teaching Methods	2
Mathematical Reasoning I	3	Mathematical Reasoning II	3
Fundamentals of Music	2		
<hr/>		<hr/>	
	16		16

<b>Junior First Semester</b>		<b>Second Semester</b>	
Philosophy of Music	2	Physical Science Elective*	3
Bible	5	Teaching Arithmetic & Science**	3
English Literature	3	History of Civilization II	3
Teaching Reading & Language**	3	Philosophy of Education	2
History of Civilization I	3	American Literature	3
		Bible	2
<hr/>		<hr/>	
	16		16

<b>Senior First Semester</b>		<b>Second Semester</b>	
Children's Literature	3	Student Teaching	8
General Psychology	2	Electives	8
Early Childhood Development	3		
Bible	3		
Christian Womanhood	2		
Baptist History	2		
Elective	1		
<hr/>		<hr/>	
	16		16

\*This may be any chemistry, physics or geology course.

\*\*in the Elementary School

## Secondary Education Major

This major is for students who wish to teach in the Christian school on the high school level or above. Secondary Education majors are required to select two teaching fields comprised of 22 hours each. Upon completion of this course of study, the degree of Bachelor of Ministry is awarded.

<b>Freshman First Semester</b>		<b>Second Semester</b>	
Old Testament Survey	3	New Testament Survey	3
Grammar & Composition I	3	Grammar & Composition II	3
Personal Evangelism	2	Philosophy of Music	2
Beginning Keyboarding	2	Computer Basics	2
Bible	3	Bible	3
Introduction to Student Life	1	Introduction to Education	2
Bible	2		
<hr/>		<hr/>	
	16		16

<b>Sophomore First Semester</b>		<b>Second Semester</b>	
Baptist History I	2	Electives	2
Tests and Measurements	2	Bible	3
Grammar & Composition III	3	Professional Communication	2
United States History I	3	Teaching Field	7
Teaching Field	3	General Teaching Methods	2
Bible Doctrines I	3		
General Mathematics	0		
<hr/>		<hr/>	
	16		16

<b>Junior First Semester</b>		<b>Second Semester</b>	
Bible	4	Bible	3
Teaching Field	11	Teaching Field	14
Philosophy of Education	2		
<hr/>		<hr/>	
	17		17

<b>Senior First Semester</b>		<b>Second Semester</b>	
Bible	2	Student Teaching	8
General Psychology	2	Electives	7
Teaching Field	9		
Christian Womanhood (Ladies)	2		
Pastoral Assistant Elective (Men)*	2		
<hr/>		<hr/>	
	15		15

\*Pastoral Assistant Electives are located on page 66 under Pastoral Assistant Fields of Specialty.

## Teaching Fields for Secondary Education

### Business (Ladies)

Intermediate Keyboarding	3
Basic Word Processing	3
Advanced Word Processing	3
Basic Spreadsheets	3
Databases	2
Secretarial Procedures	3
Desktop Publishing I	3
Business Electives	2
<b>Total</b>	<b>22</b>

### English

American Literature	3
English Literature	3
Literature Elective	3
Advanced Grammar & Composition	6
Creative Writing	2
Literary Criticism	3
Analytical Reading & Reasoning	2
<b>Total</b>	<b>22</b>

### History

United States History II	3
History of Civilization I and II	6
Seventeenth-Century English History	3
History Electives	10
<b>Total</b>	<b>22</b>

### Mathematics

Calculus I and II	10
Linear Algebra	3
Abstract Algebra	3
Trigonometry	3
Geometry	3
<b>Total</b>	<b>22</b>

### Music

Music Theory I, II, III and IV	12
Musicianship I & II	4
Song Leading I and II	2
Teaching Music to Young People	2
Music History	2
<b>Total</b>	<b>22</b>

### Science

Physics I and II	6
General Chemistry	3
Biological Science Electives	6
Science Electives	7
<b>Total</b>	<b>22</b>

## GSBC's Dormitories

OUR BEAUTIFUL DORMITORIES are a great place to live while going to school. Comfortable, modern rooms are available for each student who stays in our on-campus facilities. Each room is equipped with an individual air conditioning and heating unit as well as a telephone and voice mail.

Living in this environment with other young people who are also training for the ministry does a lot to prepare students for the Lord's work and gives them an opportunity to make friends for a lifetime.



## Missions Major (Men)

Students who feel the call of God to go to the mission field should consider this course of study. It is designed to train and equip the missionary candidate with the proper tools necessary for working on the mission field. Upon completion of this course, the student will receive a Bachelor of Ministry degree with a major in Missions.

### Freshman First Semester

Old Testament Survey	3
Grammar & Composition I	3
Church Administration	1
Church Education	2
Personal Evangelism	2
Life of Christ	2
Introduction to Student Life	1
Beginning Keyboarding	2

### Second Semester

New Testament Survey	3
Grammar & Composition II	3
Church Administration	1
Church Education	2
Introduction to Missions	3
The Local Church	2
Computer Basics	2

16

16

### Sophomore First Semester

Grammar & Composition III	3
Bible Doctrines I	3
Church Administration	1
Church Education	2
Missionary Evangelism	2
Acts	3
Baptist History	2
General Mathematics	0

### Second Semester

Professional Communication	2
Bible Doctrines II	3
Church Administration	1
Church Education	2
Romans	3
Bible	3
Fundamentals of Music	2

16

16

### Junior First Semester

Junior Bible Seminar	3
Church Education	2
Homiletics I	2
Song Leading I	2
Biographies of Great Missionaries	2
Daniel	2
United States History	3

### Second Semester

Survey of Missions	3
Church Education	2
Homiletics II	2
Song Leading II	2
Revelation	2
Contemporary Theology	3
Greek	3

16

16

### Senior First Semester

Customs & Cultures	2
Church Education	2
Practical Church Training	2
Pastoral Epistles	2
Prayer	2
General Psychology	2
The Home	2
Electives	2

### Second Semester

Senior Bible Seminar	3
Church Education	2
Practical Church Training	2
Biblical Counseling	2
Philosophy of Music	2
History of Missions	3
Bible	2

16

16

## Missions Major (Ladies)

Students who feel the call of God to go to the mission field should consider this course of study. It is designed to train and equip the missionary candidate with the proper tools necessary for working on the mission field. Upon completion of this course, the student will receive a Bachelor of Ministry degree with a major in Missions.

<b>Freshman First Semester</b>		<b>Second Semester</b>	
Old Testament Survey	3	New Testament Survey	3
Grammar & Composition I	3	Grammar & Composition II	3
Introduction to Student Life	1	Computer Basics	2
Personal Evangelism	2	Bible	3
Beginning Keyboarding	2	Philosophy of Education	3
Bible	3	The Missionary Wife	2
Introduction to Education	2		
<hr/>		<hr/>	
	16		16

<b>Sophomore First Semester</b>		<b>Second Semester</b>	
United States History I	3	History of Civilization I	3
Tests and Measurements	2	Bible	4
Grammar & Composition III	3	Speech	2
Baptist History I	2	General Science	3
Bible Doctrines I	3	General Mathematics	0
Fundamentals of Music	2	Intro to Missions	3
Missions Electives	1		
<hr/>		<hr/>	
	16		15

<b>Junior First Semester</b>		<b>Second Semester</b>	
Philosophy of Music	2	Physical Science Elective*	3
Bible	5	Mission Electives	3
English Literature	3	Teaching Art, History, Music, & P.E.**	3
Teaching Reading & Language**	3	Bible	4
Electives	3	American Literature	3
<hr/>		<hr/>	
	16		16

<b>Senior First Semester</b>		<b>Second Semester</b>	
Children's Literature	3	General Teaching Methods	2
General Psychology	2	Teaching Arithmetic & Science**	3
Early Childhood Development	3	History of Civilization II	3
Bible	3	Electives	9
Christian Womanhood	2		
Mission Electives	3		
<hr/>		<hr/>	
	16		17

## Music Education Major

The music department of Golden State Baptist College is designed to impart practical musical skills to dedicated musicians who will serve the Lord in independent, fundamental Baptist churches and schools. Upon completion of this course, the student will receive a Bachelor of Ministry degree with a major in Music.

<b>Freshman First Semester</b>		<b>Freshman Second Semester</b>	
Old Testament Survey	3	New Testament Survey	3
English 101	3	English 102	3
Personal Evangelism	2	Music Theory II	3
Introduction to Student Life	1	Bible	3
Music Theory I	3	Musicianship II	2
Musicianship I	2	Music Group	1
Music Group	1	Private Music Lessons	2
Private Music Lessons	2		
<hr/>		<hr/>	
	17		17

<b>Sophomore First Semester</b>		<b>Sophomore Second Semester</b>	
Music Theory III	3	Music Theory IV	3
Musicianship III	2	Musicianship IV	2
Music Group	1	Music Group	1
Private Music Lessons	2	Private Music Lessons	2
English 103	3	Bible	4
Bible	4	Beginning Keyboarding	2
Introduction to Education	2	United States History	3
<hr/>		<hr/>	
	17		17

<b>Junior First Semester</b>		<b>Junior Second Semester</b>	
Music History	2	Teaching Music to Young People	2
Song Leading I	2	Song Leading II	2
Music Group	1	Philosophy of Music	2
Private Music Lessons	2	Music Group	1
Bible Doctrines I	3	Private Music Lessons	2
Computer Basics	2	Tests & Measurements	2
General Teaching Methods	2	Bible	2
Bible	1	Baptist History	2
<hr/>		<hr/>	
	15		15

<b>Senior First Semester</b>		<b>Senior Second Semester</b>	
Piano Pedagogy*	2	Student Teaching	8
Private Music Lessons	2	Bible	2
Music Group	1	Electives	5
Professional Communication	2		
Bible	8		
<hr/>		<hr/>	
	15		15

\*Students without a piano proficiency will take music electives.

## Private Music Lessons

### Prerequisites

Private lessons require the permission of the instructor, and enrollment is a privilege. If a student lacks proper commitment, he may be disallowed from enrolling in private music lessons in subsequent semesters.

### Practice

Students are required to practice a minimum of five hours per week.

### Seminars & Performance Classes

In addition to the private lesson itself, the teacher may conduct occasional seminars with selected students who are working on similar material. Likewise, periodic performance classes may be called so students can perform in groups for each other.

### Continuation

Before a student is allowed to enroll in private music lessons as a junior within the Music Education program, he must receive approval from the Chairman of the Music Department. This approval may require performance, a written examination, and a conference.

### Recital

At the discretion of the Chairman of the Music Department, a recital may be substituted for the final examination in certain private lessons.

## GSBC's Music

GOLDEN STATE BAPTIST COLLEGE offers a strong academic approach to music that emphasizes a practical application to old-fashioned church music with a revival spirit. Our music program is patterned after the ministry of the North Valley Baptist Church, "The Singing Church." The heart of our pastor and chancellor, Dr. Jack Trieber, and his desire for Christ-honoring music is clearly evident in every service.

Dr. Mike Zachary, Chairman of the Music Department, and the music faculty endeavor to prepare students in all areas of music from fundamentals to advanced theory, and from philosophy to song leading.



## Pastoral Theology Major

*This course of study is for men who feel God has called them to preach and who are considering pastoring a church. An appropriate balance between academic, spiritual, and ministry-related courses combined with the example and influence of the North Valley Baptist Church offers the student the best possible education. Upon completion of this course, the degree of Bachelor of Ministry will be awarded with a major in Pastoral Theology.*

<b>Freshman First Semester</b>		<b>Second Semester</b>	
Old Testament Survey	3	New Testament Survey	3
Grammar & Composition I	3	Grammar & Composition II	3
Church Administration	1	Church Administration	1
Church Education	2	Church Education	2
Life of Christ	2	Acts	3
Personal Evangelism	2	Bible	2
Introduction to Student Life	1	Computer Basics	2
Beginning Keyboarding	2	General Mathematics	2
0			
<b>16</b>		<b>16</b>	
<b>Sophomore First Semester</b>		<b>Second Semester</b>	
Grammar & Composition III	3	Romans	3
Bible Doctrines I	3	Bible Doctrines II	3
Church Administration	1	Church Administration	1
Church Education	2	Church Education	2
Baptist History	2	Daniel	2
Professional Communication	2	Greek	3
United States History I	3	Fundamentals of Music	2
<b>16</b>		<b>16</b>	
<b>Junior First Semester</b>		<b>Second Semester</b>	
Junior Bible Seminar	3	The Local Church	2
Church Education	2	Church Education	2
Practical Church Training	2	Pastoral Epistles	2
Song Leading I	2	Song Leading II	2
Homiletics I	2	Homiletics II	2
Contemporary Theology	2	Philosophy of Music	2
Bible	3	Electives	4
<b>16</b>		<b>16</b>	
<b>Senior First Semester</b>		<b>Second Semester</b>	
Prayer	2	Senior Bible Seminar	3
Church Education	2	Church Education	2
Practical Church Training	2	Practical Church Training	2
America's Biblical Heritage	2	Revelation	2
General Psychology	2	Biblical Counseling	2
Survey of Missions	3	The Home	2
Bible	3	Bible	3
<b>16</b>		<b>16</b>	

## Pastoral Assistant Major

This major is prescribed for men who want to pursue the position of an assistant pastor, youth director, bus director, music director or a similar ministry in the local church. Students who select this course of study must choose one of the following fields of specialty, requiring a minimum of 16 hours: Church Ministry, Music Ministry, or Education. Upon completion of this course, the degree of Bachelor of Ministry will be awarded with a Pastoral Assistant Major.

<b>Freshman First Semester</b>		<b>Second Semester</b>	
Old Testament Survey	3	New Testament Survey	3
Grammar & Composition I	3	Grammar & Composition II	3
Church Administration	3	Church Administration	1
Church Education	2	Church Education	2
Introduction to Student Life	1	Computer Basics	2
Personal Evangelism	2	Acts	3
Life of Christ	2	Bible	2
Beginning Keyboarding	2	General Mathematics	0
<b>16</b>		<b>16</b>	

<b>Sophomore First Semester</b>		<b>Second Semester</b>	
Grammar & Composition III	3	Professional Communication	2
Bible Doctrines I	3	Bible Doctrines II	3
Baptist History	2	Church Administration	1
Church Administration	1	Church Education	2
Church Education	2	Romans	3
United States History I	3	Fundamentals of Music	2
Philosophy of Music	2	Field of Specialty	2
<b>16</b>		<b>16</b>	

<b>Junior First Semester</b>		<b>Second Semester</b>	
Junior Bible Seminar	3	Assistant Pastor	2
Church Education	2	Church Education	2
Practical Church Training	2	The Local Church	2
Homiletics I	2	Homiletics II	2
Song Leading I	2	Song Leading II	2
Contemporary Theology	2	Bible	4
Field of Specialty	3	Field of Specialty	2
<b>16</b>		<b>16</b>	

<b>Senior First Semester</b>		<b>Second Semester</b>	
Prayer	2	Senior Bible Seminar	3
Church Education	2	Church Education	2
Practical Church Training	2	Practical Church Training	2
General Psychology	2	The Home	2
Bible	5	Field of Specialty	5
Field of Specialty	3	Electives	2
<b>16</b>		<b>16</b>	

## Pastoral Assistant Fields of Specialty

### Church Ministry

Missions Elective	3
Youth Work	2
Biblical Counseling	2
Pastoral Epistles	2
Bible or Christian Education Electives	7
<b>Total</b>	<b>16</b>

### Education

Introduction to Education	2
Philosophy of Education	3
General Teaching Methods	2
Tests and Measurements	2
Teaching Field Electives*	7
<b>Total</b>	<b>16</b>

\*Any courses from page 54.

### Music Ministry

Music Theory I	3
Music Theory II	3
Musicianship I	2
Musicianship II	2
Teaching Music to Young People	2
Music History	2
Music Group (2 semesters)	2
<b>Total</b>	<b>16</b>

## GSBC's Location

GOLDEN STATE BAPTIST COLLEGE is located in Santa Clara, California, in the heart of the Silicon Valley. Santa Clara County offers a wide variety of exciting educational, recreational, entertainment, and outreach opportunities.

The nearby city of San Jose, with a population of nearly one million people, has the nation's best public safety record of any metropolitan area.

With cool summers and mild winters, the weather in the Santa Clara area is second to none. Santa Clara boasts an average of more than 300 sunny days per year and an average annual temperature of 70°.

Sight-seeing opportunities abound. To the south lie the scenic ocean-side cities of Monterey, Santa Cruz, and Carmel. To the north, there is the beautiful city of San Francisco with the Golden Gate Bridge and numerous other attractions.

The county of Santa Clara is the largest in the San Francisco Bay Area. There are 1.7 million residents in fifteen cities who are waiting for someone to reach them with the Gospel.



## Secretarial Science Major

*This course of study is designed to train ladies for full-time Christian service as secretaries. This is a full four-year program and, upon completion, a Bachelor of Ministry degree in Secretarial Science will be awarded.*

<b>Freshman First Semester</b>		<b>Second Semester</b>	
Old Testament Survey	3	New Testament Survey	3
Bible	3	Bible	3
Grammar & Composition I	3	Grammar & Composition II	3
Beginning Keyboarding	2	Intermediate Keyboarding	3
Personal Evangelism	2	Electives	2
Introduction to Student Life	1	Computer Basics	2
Electives	2		
<hr/>		<hr/>	
	16		16

<b>Sophomore First Semester</b>		<b>Second Semester</b>	
Bible Doctrines I	3	Bible	3
Baptist History I	2	Professional Communication	2
Basic Word Processing	3	Advanced Word Processing	3
Advanced Keyboarding	3	Database	2
Grammar & Composition III	3	Elective	6
United States History I	3		
General Mathematics	0		
<hr/>		<hr/>	
	17		16

<b>Junior First Semester</b>		<b>Second Semester</b>	
Bible	3	Bible	3
Secretarial Accounting I	3	Church Finance	2
Basic Spreadsheets	3	Advanced Business Applications	3
Filing and Records Management	2	Business Communications	2
Electives	4	Electives	5
<hr/>		<hr/>	
	15		15

<b>Senior First Semester</b>		<b>Second Semester</b>	
Bible	3	Bible	3
Secretarial Procedures	3	Desktop Publishing II	3
Office Machines Lab	1	Purchasing	2
Desktop Publishing I	3	Office Training	8
General Psychology	2		
Christian Womanhood	2		
Electives	3		
<hr/>		<hr/>	
	17		16

## Associate of Church Ministries

### General Studies Major (for Men)

*This course of study is designed for men who have a desire to work in the ministry. Upon completion of this course of study, the degree Associate of Church Ministries is awarded.*

<b>First Semester</b>		<b>Second Semester</b>	
Old Testament Survey	3	New Testament Survey	3
Grammar & Composition I	3	Bible	3
Bible	3	Church Education	2
Personal Evangelism	2	General Mathematics	0
Computer Basics	2	Grammar & Composition II	3
Beginning Keyboarding	2	Professional Communication	2
Introduction to Student Life	1	Elective	3
<hr/>		<hr/>	
	16		16

<b>Third Semester</b>		<b>Fourth Semester</b>	
Grammar & Composition III	3	Bible	3
Bible	3	General Science	3
Bible Doctrines I	3	Philosophy of Music	2
US History	3	Electives	8
Church Education	2		
Baptist History	2		
<hr/>		<hr/>	
	16		16

### General Studies Major (for Ladies)

*This course of study is designed for women who have a desire to work in the ministry. Upon completion of this course of study, the degree Associate of Church Ministries is awarded.*

<b>First Semester</b>		<b>Second Semester</b>	
Old Testament Survey	3	New Testament Survey	3
Grammar & Composition I	3	Bible	3
Bible	3	Christian Womanhood	2
Personal Evangelism	2	General Mathematics	0
Computer Basics	2	Grammar & Composition II	3
Beginning Keyboarding	2	Professional Communication	2
Introduction to Student Life	1	Elective	3
<hr/>		<hr/>	
	16		16

<b>Third Semester</b>		<b>Fourth Semester</b>	
Grammar & Composition III	3	Bible	3
Bible	3	General Science	3
Bible Doctrines I	3	Philosophy of Music	2
US History	3	Electives	8
General Psychology	2		
Baptist History	2		
<hr/>		<hr/>	
	16		16

### Secretarial Science Major (for Ladies)

*This course of study is designed for ladies who want to receive practical training as a church or Christian school secretary. Upon completion of this course of study, the degree Associate of Church Ministries with an Emphasis in Business is granted.*

<b>First Semester</b>		<b>Second Semester</b>	
Old Testament Survey	3	New Testament Survey	3
Bible	2	Bible	2
Grammar & Composition I	3	Grammar & Composition II	3
Basic Word Processing	3	Advanced Word Processing	3
Personal Evangelism	2	Filing & Records Management	2
Beginning Keyboarding	2	Intermediate Keyboarding	3
Introduction to Student Life	1		
General Mathematics	0		
<hr/>		<hr/>	
	16		16
<b>Third Semester</b>		<b>Fourth Semester</b>	
Grammar & Composition III	3	Bible	3
Bible	3	The Home	2
Bible Doctrines I	3	Basic Spreadsheets	3
Desktop Publishing I	3	Secretarial Procedures	3
Databases	2	Desktop Publishing II	3
Office Machines Lab	2	Philosophy of Music	2
<hr/>		<hr/>	
	16		16

### Pastoral Major (for Men)

*This course of study is designed for men who have a desire to work in the ministry as a second man. Upon completion of this course of study, the degree Associate of Church Ministries with a major in Pastoral Theology is awarded. To enter this program, men must be at least 20 years of age and graduating no earlier than the age of 22.*

<b>First Semester</b>		<b>Second Semester</b>	
Old Testament Survey	3	New Testament Survey	3
Grammar & Composition I	3	Acts	3
Introduction to Student Life	1	Grammar & Composition II	3
Personal Evangelism	2	Church Education	3
Church Education	3	Life of Christ	2
Professional Communication	2	Computer Basics	2
Bible	2		
General Mathematics	0		
<hr/>		<hr/>	
	16		16
<b>Third Semester</b>		<b>Fourth Semester</b>	
Bible Doctrines I	3	Bible Doctrines II	3
Bible	3	Church Education	3
Church Education	3	The Home	2
Fundamentals of Music	2	Bible	4
Homiletics I	2	Song Leading I	2
Grammar & Composition III	3	Homiletics II	2
<hr/>		<hr/>	
	16		16



*Computer Lab*

## CLASS DESCRIPTIONS

## Department of Bible

- BI 101 Old Testament Survey** *3 hours*  
A fundamental survey of the entire Old Testament. Each book is examined, outlined, and its purposes and characteristics are presented.
- BI 102 New Testament Survey** *3 hours*  
A fundamental survey of the entire New Testament. Each book is examined, outlined, and its purposes and characteristics are presented.
- BI 103 Personal Evangelism** *2 hours*  
A detailed study of how to effectively carry out the Great Commission. Proven methods of confrontational, door-to-door soul winning, along with practical instruction in evangelizing in any situation.
- BI 105 Acts** *3 hours*  
A study of the book of Acts with special emphasis on the church and its polity and philosophy and the purpose of the New Testament local church.
- BI 107 The Life of Christ** *2 hours*  
The life of Christ is studied. The life of Christ is paramount if one is to know the Author of our faith. This course will begin with the pre-existence of Christ and continue with the birth, ministry, trial, crucifixion, burial, resurrection, and ascension of our Lord.
- BI 201, 202 Bible Doctrines I and II** *3 hours*  
The purpose of this study is to instruct our students in the subjects of theology, Bibliology, Christology, pneumatology, anthropology, hamartiology, soteriology, ecclesiology, angelology, and eschatology. *Three hours each semester.*
- BI 203 Genesis** *3 hours*  
This course takes the student from the origin of the world through the early history of the nation of Israel. Special emphasis is placed upon creation, the fall of man, and God's dealings with the lives of the patriarchs.
- BI 204 Romans** *3 hours*  
An exposition of the book of Romans detailing the doctrines of salvation, sanctification, and service.
- BI 205 Isaiah** *3 hours*  
A careful study of the life of the prophet Isaiah and his message to the nation of Israel. Special attention is given to his prophetic revelations concerning the Messiah Who was to come.
- BI 206 Jeremiah and Lamentations** *3 hours*  
A study of the ministry of the prophet Jeremiah as God's messenger to the Israelites. His compassionate plea to God's people and his Messianic prophecies will be emphasized.
- BI 210 Bible Parables** *2 hours*  
An overview of the parables in the Bible with an emphasis on the parables that Jesus related in the New Testament. Their meaning, significance, and direct applications will be discussed.
- BI 235 Galatians & Philipians** *2 hours*  
This class is an examination of the doctrines set forth in these two epistles as well as practical applications that can be made, including a study of the life of the Apostle Paul as he wrote each book.
- BI 240 The Gospel of John** *1 hour*  
This course is an intensive exegetical study of John, including an investigation of the uniqueness of this Gospel compared with the synoptic Gospels, and a study of the life and teachings of Christ that are distinctive in this book.
- BI 243 Religions of the World** *2 hours*  
This course is an introduction to the academic study of the Buddhist, Catholic, Hindu, and Muslim religious traditions through an examination of the historical development and central practices of each. The emphasis of this study is the distinction between Biblical Christianity and the other religions presented.

- BI 301, 302 Greek I and II** *3 hours*  
Prerequisite: Grammar and Composition II. Provides a foundational basis for grammar in New Testament Greek. Pronunciation, forms, syntax, and simple translation. Includes practical instruction in performing word studies and preparation for sermons and Bible studies. *Three hours each semester.*
- BI 305 General Epistles** *2 hours*  
An exposition and practical study of the epistles of James; I and II Peter; I, II, and III John; and Jude.
- BI 306 Pastoral Epistles** *2 hours*  
A practical study of the instruction, admonition, and direction given to pastors in I and II Timothy and Titus.
- BI 307 Hebrews** *3 hours*  
An exposition of the book of Hebrews, with special attention given to Christ's divine priesthood and its correlation with New Testament Christianity.
- BI 309 Contemporary Theology** *2 hours*  
Contemporary theology has a two-fold approach. This course traces Protestant and Baptist history throughout the ages. Secondly, it clarifies and defines modernism, liberalism, new evangelicalism, evangelicalism, fundamentalism, and even pseudo-fundamentalism.
- BI 310 The Local Church** *2 hours*  
A detailed study of the origin of the local church and its history and primary functions according to the New Testament.
- BI 312 Cults** *2 hours*  
An examination of the most prominent religions that are not anchored in the Scriptures, a study of the doctrines of the Bible that counter these false teachings, and a consideration of effective soul-winning methods that can be used with cult members.

## GSBC's Ministries

OUR MAIN OBJECTIVE at Golden State Baptist College is training young people for the ministry. We offer many opportunities for students to be involved in serving the Lord on a regular basis while preparing to be in full-time Christian service. Through the bus ministry, the Sunday school, primary, junior, teen and adult church ministries, hundreds of people are reached each week. Our students are involved in soul winning and follow up every week and are able through these and other ministries to see God working in their lives.



**BI 321 Junior Bible Seminar** **3 hours**

The primary purpose of this seminar is to help the student learn how to bring together all his tools in the preparation of Sunday school lessons and sermons, and it is specifically designed to make the Bible come to life for the student.

**BI 403 Prayer** **2 hours**

The importance of a faithful, dedicated prayer life is carefully studied. A comprehensive look at what the Scriptures tell us about prevailing prayer and getting things from God will be the focus of this class.

**BI 404 Proverbs** **2 hours**

An expository study of the practical book of wisdom. A father's instruction to his son is examined for its daily application in the life of God's servants.

**BI 406 Daniel** **2 hours**

A careful examination of the exemplary life of Daniel, his experiences and the prophetic visions contained in this book.

**BI 409 Revelation** **2 hours**

An overview of the Book of Revelation, including the letters to the seven churches and the prophecies concerning the end times.

**BI 421 Senior Bible Seminar** **3 hours**

This seminar will address specific weaknesses of our students that are revealed in the evaluation of the Test of General Bible Knowledge, which is taken upon the completion of the junior year. The purpose of this course is to ensure that our graduates are properly prepared for the ministry.

## **Department of Business**

**BU 101 Beginning Keyboarding\*** **2 hours**

This course is designed to teach the proper techniques of touch keyboarding with an emphasis on rhythm, accuracy and speed. Students with any previous training can be tested for proficiency prior to enrollment.

**BU 102 Intermediate Keyboarding\*** **3 hours**

Prerequisites: At least a "C" in BU 101 or a satisfactory score on a typing proficiency exam. Emphasis is placed on increasing speed and efficiency on a microcomputer.

**BU 104 Computer Basics\*** **2 hours**

Basic computer capabilities and terminology. Use PC to create, save, modify, and print basic text, spreadsheet, and database documents.

**BU 201 Basic Word Processing** **3 hours**

Prerequisite: At least a "C" in BU 102 and BU 104. Introduction to document creation, through the use of saving, printing, selecting, moving, copying and replacing text.

**BU 202 Personal Finance** **2 hours**

This course is designed to train students to handle personal financial matters as well as church and school budgets. Included in this course are setting up a family budget, dealing with credit, insurance coverage, checking and savings accounts, and techniques of comparison shopping.

**BU 206 Advanced Word Processing\*** **3 hours**

Prerequisite: At least a "C" in BU 201. Document enhancement through use of fonts, size, alignment, headers, footers, borders, and graphics.

**BU 206 Databases\*** **2 hours**

Prerequisite: At least a "C" in BU 104. Students will learn how to create and manage database files, modify layout and print reports that would pertain to the ministry. Filemaker Pro<sup>®</sup> will be used.

**BU 227 Advanced Keyboarding\*** **3 hours**

Emphasis is placed on increasing speed and efficiency on a microcomputer.

**BU 301 Basic Spreadsheets\*** **3 hours**

Prerequisite: At least a "C" in BU 104. Create, edit, and save spreadsheets. Techniques in copying formatting, inserting/deleting cells, rows and columns. Basics of sorting, searching, and producing data to display or print in graphical form via charts. Microsoft<sup>®</sup> Excel will be used.

**BU 302 Advanced Business Applications\*** **3 hours**

Prerequisite: At least a "C" in BU 104. Students will gain a basic use of Power Point and learn how to build a web page.

**BU 305 Filing & Records Management** **2 hours**

This course covers filing methods, systems, procedures, and equipment management procedures.

**BU 306 Business Communications** **2 hours**

This course incorporates business English skills into the techniques of writing business letters, memos, and reports.

**BU 309 Secretarial Accounting I** **3 hours**

This is a course in the accounting system as it applies to the secretarial position. Basic, entry-level accounting is studied.

**BU 310 Church Finance\*** **2 hours**

Using QuickBooks<sup>®</sup>, the student will learn the basic principles of setting up a bookkeeping system appropriate for churches and Christian schools. Computer lab will be utilized.

**BU 401 Secretarial Procedures** **3 hours**

This course concentrates on training the student in secretarial duties, office procedures, office ethics, proper dress, and develops responsibility and flexibility.

**BU 404 Office Training** **8 hours**

This course provides an opportunity to use the knowledge and skills previously learned with the assignment of duties in an actual office setting.

**BU 405 Office Machines Lab** **1 hour**

This course presents the principles and functions of modern office machines such as data entry, dictating and transcribing machines, calculators, switchboards, postage meters and scales, fax machines, and copiers.

**BU 406 Purchasing** **2 hours**

Introduces the student to basic purchasing procedures, source selection, cost containment strategies, and legal responsibilities as a purchasing agent. Practical methods of purchasing, supplier management, and reporting are provided to assist the student in developing/maintaining a "value added" attitude/capability.

**BU 407 Desktop Publishing I\*** **3 hours**

This course is an introduction to desktop publishing principles as used in designing professional documents.

**BU 408 Desktop Publishing II\*** **3 hours**

Prerequisite: At least a "C" in BU 407. This course continues the presentation of the principles of design with a more in-depth study of graphic design. Various graphics projects will be assigned during the semester.

*\*These courses make use of the computer lab.*

## Department of Christian Education

<b>CE 141 Introduction to Student Life</b>	<b>1 hours</b>
This required course is for all new incoming students. This course is designed to help and acquaint the new student to spiritual, academic and social aspects of college life.	
<b>CE 203 Baptist History</b>	<b>2 hours</b>
The significance of our historic Baptist faith is examined in this study of the history of the church from the time of Christ to the present.	
<b>CE 303 Assistant Pastor</b>	<b>3 hours</b>
This course studies the functions, philosophies, responsibilities, and characteristics of an assistant pastor. Special emphasis will be given to completing the pastor's ministry and working as a team player.	
<b>CE 361 Beginning Spanish</b>	<b>2 hours</b>
An introduction to basic conversational Spanish and the conventions of Spanish grammar.	
<b>CE 362 Intermediate Spanish</b>	<b>2 hours</b>
An continuation of Beginning Spanish. This course explores comprehensive conversational Spanish.	
<b>CE 401 Church Education</b>	<b>3 hours</b>
A careful study of the various ministries and facets of an aggressive, soul-winning, New Testament church. This course will emphasize church planting and church growth, and much detail will be given regarding procedures, philosophy, pastoral duties, finances, goals, hiring and maintaining staff, and many other functions relating to management of church ministries.	
<b>CE 405 Bus Ministry</b>	<b>2 hours</b>
This course examines the planning, promoting, building, and operation of a successful church bus ministry. This class also provides an opportunity to be involved in the largest bus ministry west of the Mississippi.	
<b>CE 406 Soul-winning Ministry</b>	<b>2 hours</b>
A study of the organization and implementation of church soul-winning ministries. Details of various types of soul-winning ministries will be examined, along with other methods of getting out the Gospel.	
<b>CE 407 Youth Work</b>	<b>2 hours</b>
This course explores the many facets of successful youth work in the local church. Emphasis will be placed on organization, philosophy, and practicality. Subjects such as activities, programs, soul winning, parent-teen relationships, and preaching to teens will be studied.	
<b>CE 409 The Home</b>	<b>2 hours</b>
Few things in the ministry are more important than a Christian leader's home. The home is definitely under attack. We see 75% of all homes suffer through an adulterous affair; and even in Christian homes, the figure is 50%. The importance of spending quality time with the family and putting forth great effort to rear godly children will be stressed.	
<b>CE 410 Church Construction</b>	<b>2 hours</b>
This course offers the pastoral student a basic working knowledge of the construction of church buildings. It will include planning, designing, reading building plans, and hands-on construction.	
<b>CE 411 America's Biblical Heritage</b>	<b>2 hours</b>
"America, America, God shed His grace on thee." Revisionary history writers and educators are seeking to abolish the Biblical heritage of America. Thus, this class will retrace the godly roots and foundation of America's history.	
<b>CE 413 Christian Womanhood</b>	<b>2 hours</b>
This course attends to the mental, physical, emotional, and spiritual issues affecting all Christian women and teaches the practical, Biblical methods of dealing with them.	
<b>CE 422 Biblical Counseling</b>	<b>2 hours</b>

This course examines the proper principles and guidelines involved in successful pastoral counseling. The pastor must develop wisdom and discernment in dealing with his people concerning problems and decisions in their lives. This course examines that responsibility and how to prepare for it properly.

## Department of Education

<b>ED 101 Introduction to Education</b>	<b>2 hours</b>
A basic study of the history and principles of education and the art of teaching. It shows the application of how education correlates with the Word of God.	
<b>ED 102 Philosophy of Education</b>	<b>2 hours</b>
A study of the historical and philosophical developments of education with an emphasis on a Biblical philosophy of Christian education and its methods and goals.	
<b>ED 201 Tests and Measurements</b>	<b>2 hours</b>
A careful study of the use of various methods of measuring the progress of the pupil through standardized and teacher-imposed testing.	
<b>ED 202 General Teaching Methods</b>	<b>2 hours</b>
This course equips the student with the basic tools necessary to plan, prepare, and teach in the classroom. Practical teaching techniques, methods of classroom control, and preparing lesson plans will be examined.	
<b>ED 205 Cooking</b>	<b>3 hours</b>
This is a practical cooking course which covers nutritional meal planning and food preparation and allows the students practice in meal preparation.	
<b>ED 206 Sewing</b>	<b>3 hours</b>
This course covers the basic principles of sewing including the use of the sewing machine, basic sewing stitches and methods, and the choosing of a pattern and fabric. A simple garment will be made.	
<b>ED 301 Teaching Reading &amp; Language (Elementary School)</b>	<b>3 hours</b>
This course examines the methods and principles involved in teaching children to read, as well as a study of the other basic concepts in the language arts.	
<b>ED 302 Teaching Arithmetic &amp; Science (Elementary School)</b>	<b>3 hours</b>
This course provides the student with foundational techniques and principles necessary for teaching children the basics in mathematics.	
<b>ED 304 Teaching Art, History, Music, &amp; P.E. (Elementary School)</b>	<b>2 hours</b>
The fundamentals of teaching rhythm, theory, and appreciation for appropriate music and tasteful art are examined as they relate to elementary children.	
<b>ED 403 General Psychology</b>	<b>2 hours</b>
A study of the mental, physical, and social makeup of man and how to deal with all types of people. A practical course in understanding and relating to others.	
<b>ED 404 Student Teaching</b>	<b>15 hours</b>
This course involves observation, participation, and actual teaching in the classroom at Golden State Baptist Schools. The student is under the direction and supervision of the elementary or secondary teacher and college faculty supervisor.	
<b>ED 405 Early Childhood Development</b>	<b>3 hours</b>
This course focuses on the physical, mental, social, and spiritual development of a child from conception to five years of age with emphasis on character development.	
<b>ED 406 Teaching Seminar</b>	<b>7 hours</b>
This course is sometimes taken concurrently with ED 404 and is a workshop for student teachers.	
<b>ED 407 Children's Literature</b>	<b>3 hours</b>
A survey of literature suitable for children, with an emphasis on storytelling.	

## Department of English

### EN 99 Basic English

No Credit

This is a study of grammar and sentence construction and is required of students who do not pass the English Placement Test. (No credit)

### EN 101 Grammar & Composition I

3 hours

Prerequisite: A passing score on the EN 99 section of the English Placement Test or a passing grade in EN 99. This course is a review of basic grammar and mechanics of the English language.

### EN 102 Grammar & Composition II

3 hours

Prerequisite: A passing score on the EN 101 section of the English Placement Test or a passing grade in EN 101. This course continues to review English grammar while beginning a study of composition. The course emphasizes writing with clarity and conciseness.

### EN 103 Grammar & Composition III

3 hours

Prerequisite: A passing grade in EN 102. This course, assuming a comprehensive knowledge of English grammar, stresses effective organization and significant content in writing. Students will be required to write a research paper.

### EN 200 Biographies of Great Men

2 hours

This course is a study of the lives of Christian leaders, pastors, evangelists, and missionaries who have had outstanding testimonies for Christ.

### EN 302 American Literature

3 hours

This course is a survey of great American literature from the colonial period to the present and an examination of its relationship and value to the historical period in which it was written.

### EN 303 English Literature

3 hours

This course is a survey of English literature and the relationship of the literature surveyed to the time in which it was written, as well as its value in history and in the present.

### EN 304 Professional Communication

2 hours

This course is a workshop in developing communication skills as a public speaker with a special emphasis on tactfully handling delicate situations.

### EN 305 Homiletics I

2 hours

This is a study of the preparation and delivery of sermons which deals with selecting and developing a topic as well as the delivery of the message.

### EN 306 Homiletics II

2 hours

This is a continued study of the preparation and delivery of sermons which includes practice preaching.

### EN 307 Biographies of Great Missionaries

2 hours

This course specifically studies the lives of great missionaries who have had an outstanding impact on the mission fields to which God called them.

### EN 401 Creative Writing

2 hours

This course is a study and practice of various literary tools for creative writing with an emphasis on original composition.

### EN 402 Literary Criticism

3 hours

This course presents various methods of critiquing selected works including poems, essays, and fiction.

### EN 403, 404, 405, 406 Advanced Grammar and Composition I, II, III and IV

2 hours

Prerequisite: EN 102 or permission of instructor. This course is an advanced view of grammar and composition, with a special emphasis on teaching English in the secondary school. (Two hours each semester)

### EN 423 Introduction to Shakespeare

2 hours

This course is an introduction to Shakespeare's major plays and sonnets and the Renaissance culture in which Shakespeare flourished. The format for this class is discussion and performance.

## Department of History

### HI 101, 102 History of Civilization I and II

3 hours

A survey of the history of man through ancient, medieval, and modern times. The various cultural developments of principal countries, along with their contributions to civilization, will be emphasized. *Three hours each semester.*

### HI 201, 202 United States History I and II

3 hours

A detailed study of the establishment of the United States from its beginnings up to present-day affairs. Emphasis is placed on the people, events, political influences, and philosophies that helped shape our country into a great republic. *Three hours each semester.*

### HI 204 Reformation History

3 hours

A view of the Protestant Reformation and its influence on civilization and on Christianity. Special emphasis on the work of Martin Luther and the predominance of the Roman Catholic Church.

### HI 301 American Government

3 hours

This course explores the organization and characteristics of the American government. It examines the functions of our government in both national and foreign affairs.

### HI 302 Nineteenth-Century European History

3 hours

A study of Europe's history from Napoleon's demise to the onset of World War I. The development of European military, industry, and international influence around the globe.

### HI 303 American Constitutional History

3 hours

This course examines our constitutional government from its English and colonial roots. It examines the ascent of our constitution through its framing, adoption, and ratification.

### HI 306 American Involvement in World War II

2 hours

This course examines the America's involvement in World War II from the pre-war stages, through the horrific attack on Pearl Harbor, the D-Day invasion, and the subsequent victory. The Army, Navy, Marines, famous leaders and notable events will be discussed.

### HI 400 Seventeenth-Century English History

3 hours

The seventeenth century for Britain was a time of prolific achievement in the areas of politics, science, art, and literature. This class will examine some of the amazing accomplishments within the context of their historical time and place.

### HI 401 History of England

3 hours

A survey of England's history from its earliest formation and operation to its current significant role. Also examines England's influences on America and other world governments.

### HI 402 Civil War and Reconstruction

3 hours

This course examines the civil and political conflicts between the North and the South and the major campaigns of the Civil War. It also explores the reuniting and rebuilding of our country after the war.

## Department of Mathematics

### MA 101 General Mathematics

No credit

This course is designed for students with minimal mathematical background. It includes a comprehensive review of basic and consumer arithmetic.

**MA 190 Mathematical Reasoning I** **3 hours**

Prerequisite: MA 101. An introduction to analytical reasoning as it pertains to mathematics as well as a comprehensive study of the math that will be taught in the elementary grades.

**MA 191 Mathematical Reasoning II** **3 hours**

Prerequisite: MA 190. A continuation of the study of the math that will be taught in the elementary grades.

**MA 203 College Algebra** **3 hours**

Prerequisite: One year of high school algebra. A review of the functions in basic algebra. Examines graphs, complex numbers, linear systems, polynomials, exponential and logarithmic functions.

**MA 204 College Trigonometry** **3 hours**

Prerequisite: MA 203. This course presents a study of trigonometric functions through examination of identities, solutions to equations, and graphs.

**MA 301 Calculus I** **5 hours**

Prerequisite: MA 204. An introduction to limits and continuity, derivatives and their applications, and integration.

**MA 302 Calculus II** **5 hours**

Prerequisite: MA 301. This course examines transcendental functions, applications of integrals, techniques of integration, conic sections, and infinite series.

**MA 401 Linear Algebra** **3 hours**

Prerequisite: MA 203. Introduces vectors and their functions, linear functions, matrices, and quadratic forms.

**MA 402 Modern Geometry** **3 hours**

Prerequisite: MA 401. A study of the methods and functions of transformational geometry in planes and space, including Euclidean geometry and methods of construction.

**MA 403 Abstract Algebra** **3 hours**

Prerequisite: MA 204. This study examines set and number theory, groups, rings, fields, and integral domains.

## Department of Missions

**MI 301 Introduction to Missions** **3 hours**

An examination of both the practical aspects of life on the mission field and the biblical philosophy that properly determines effective missions work.

**MI 302 Survey of Missions** **3 hours**

A study of the practical and significant aspects of modern missions. Missionary work is viewed from both the local church and the mission field.

**MI 304 Missionary Evangelism** **2 hours**

This course details the principles, techniques, and philosophies needed in reaching people with the Gospel on the foreign field.

**MI 305 The Missionary's Wife** **2 hours**

This course explains how a missionary's wife can be a help to her husband as they seek to raise support, go on deputation and influence their mission field for Christ. Practical instruction is also given on raising children and maintaining a home abroad.

**MI 401 Customs and Cultures** **2 hours**

A study of the various cultures and customs of people around the world. This course helps equip the student with a better understanding of how to reach and minister to various groups of people.

**MI 402 History of Missions** **3 hours**

This course examines the history of missions from apostolic days to the present, including the biographies of the world's greatest missionaries.

## Department of Music

**MU 99 Fundamentals of Music** **2 hours**

The rudiments of music, including rhythm, scales, chords, key signatures, and conducting patterns, are covered in this course. A student may be excused from this course by examination.

**MU 101, 102 Music Theory I & II** **3 hours**

Prerequisite: MU 99 or successful completion of the Fundamentals of Music Placement Examination. Mastering the materials of music, including triads and seventh chords; analysis of hymns and gospel songs; basic part writing.

**MU 111, 112 Musicianship I & II** **2 hours**

Prerequisite: MU 99 or successful completion of the Fundamentals of Music Placement Examination. This course includes sight singing, rhythm, dictation, and keyboard skills designed to correlate with Music Theory I & II.

**MU 141 Voice Workshop** **2 hours**

This class is designed to familiarize the student with the basics of singing. A strong emphasis is placed on mastering these basic techniques, and the student is given the opportunity to demonstrate his progress in class.

**MU 155 Piano Class I** **1 hour**

## GSBC's Church

THE HEARTBEAT OF GOLDEN STATE Baptist College is the great North Valley Baptist Church of Santa Clara, California. Under the direction of the pastor, Dr. Jack Trieber, this church has enjoyed growth in every year of its existence, many thousands have been saved and baptized, and men and women have been sent out around the world to build churches and give out the Gospel in places both far and near.

North Valley Baptist Church is an old-fashioned church that is known for its revival spirit. It has been called "the singing church" because of the enthusiastic congregational singing and strong music program. Of course, the most exciting part of the services is the preaching. The auditorium is packed for every service, as people come week after week to hear the Word of God. Because the students at Golden State Baptist College are required to attend North Valley Baptist Church, they are able to see the ministry firsthand and to experience what makes it work.



This is an introduction to the piano for students who have never played before. This course includes both the rudiments of music and the basics of piano playing.

**MU 201, 202 Music Theory III & IV** 3 hours

Prerequisite: MU102 and MU 112. Harmonization of melodies, analysis, and original composition; modulation; ninth, eleventh, and thirteenth chords; Neapolitan and augmented sixth chords.

**MU 211, 212 Musicianship III & IV** 1 hour

Prerequisite: MU 102 and MU 112. This course includes sight singing, rhythm, dictation, and keyboard skills designed to correlate with Music Theory III & IV.

**MU 310, 311 Song Leading I & II** 2 hours

Prerequisite: MU 99 or successful completion of the Fundamentals of Music Placement Examination. This course covers basic conducting patterns; leading congregational songs; platform manner. The second semester covers more complex congregational songs and an introduction to choral conducting.

**MU 320 Accompanying Congregational Singing** 2 hours

Prerequisite: MU 101 or permission from the instructor. Appropriate methods for playing hymns and gospel songs; basic modulations; writing congregational accompaniments.

**MU 330 Philosophy of Music** 2 hours

A course designed to instruct the student in the biblical approach to music, as well as in practical aspects of the church music program. This course is of the utmost importance, especially for pastors.

**MU 331 Music History** 2 hours

A survey of the history of Western music with a special emphasis on music in America.

**MU 340 Teaching Music to Young People** 2 hours

Prerequisites: MU202 and MU 212. Practical teaching methods for teaching songs and general music to elementary children; an examination of the special problems of the changing voice in the junior high choir.

**MU 440 Piano Pedagogy** 2 hours

Prerequisites: MU202 and MU 212. Practical teaching methods for instructing beginning and intermediate piano students.

**MU 150 College Choir** 1 hour

**MU 151 College Orchestra** 1 hour

**MU 152 College Chorale** 1 hour

**MU 153 Tour Group** 1 hour

**MU 160 Private Piano** 2 hours

**MU 161 Private Voice** 2 hours

**MU 162 Semi-private Voice** 2 hours

Note: Private instruction for traditional instruments of the orchestra is available by special arrangement with the Chairman of the Music Department.

## Department of Science

**SC 102 General Science** 3 hours

An introduction to the basic concepts of scientific principles, functions, and applications. Not for credit in teaching field of Secondary Education major.

**SC 201 General Chemistry** 3 hours

A general course examining the periodic table, atomic structure, names and formulas of compounds, chemical bonds and reactions.

**SC 202 Inorganic Chemistry** 3 hours

Examines atomic and molecular structure, ionic equilibria, thermodynamics, and coordination chemistry.

**SC 203 Organic Chemistry** 3 hours

Prerequisite: MA 202. This course studies the structure and reaction mechanisms of organic compounds. It includes the principles of stereochemistry and infrared spectroscopy.

**SC 302 Biological Science** 3 hours

An introduction to the basic principles of living organisms, including cell biology and scientific methodology.

**SC 305, 306 Physics I and II** 3 hours

This course examines the concepts of mechanics, motion, force, the structure and properties of matter, heat, electricity, and wave motion. *Three hours each semester.*

**SC 401 General Geology** 3 hours

A study of the general principles of geology, including the earth's composition, structure, and operations.

# Index

<b>A</b>	
Academics .....	25
Activities .....	19, 31
Applying for Admission.....	23
First-Time Students .....	23
Transfer Students.....	24
Automobile .....	28
<b>B</b>	
Bears Basketball.....	28
<b>C</b>	
Chapel .....	29, 30
Christian Service .....	29
Church.....	73
Class Descriptions .....	63
Department of Bible.....	64
Department of Business.....	66
Department of Christian Education .....	67
Department of Education.....	69
Department of English.....	70
Department of History.....	71
Department of Mathematics.....	71
Department of Missions .....	72
Department of Music.....	72
Department of Science.....	74
Class Standings.....	42
<b>D</b>	
Dating.....	29
Degree Requirements .....	49
Elementary Education .....	52
General Studies (Ladies) .....	50
General Studies (Men).....	51
Missions .....	55
Music Education.....	56
Pastoral Assistant .....	59
Pastoral Theology.....	58
Secondary Education.....	53
Secretarial Science.....	62
Degrees Offered .....	40
Elementary Education .....	40
General Studies.....	40
Master of Ministries.....	41
Missions .....	40
Music Education.....	41
Pastoral Assistant .....	41
Pastoral Theology.....	40
Secondary Education.....	40
Secretarial Science.....	41
Demerit System.....	29
Doctrinal Statement .....	9
Dormitory Requirements .....	29
<b>E</b>	
Employment .....	31
English Placement Test.....	26
Expenses, Summary of.....	35
Dormitory Students.....	35
Off-Campus Students.....	35
<b>F</b>	
Fees .....	34
Application.....	34
Automobile.....	34
Computer Lab Fee.....	35
Graduation .....	34
Late Registration.....	34
Registration .....	34
Room and Board .....	34
Student Activity.....	34
Transcript Requests.....	35
Tuition .....	34
Yearbook.....	35
<b>G</b>	
General Requirements .....	22
Golden Grille .....	30
Grading System.....	44
Graduation Honors.....	48
Graduation Requirements .....	45
Bachelor of Ministry.....	45
Master's Degree.....	47
<b>I</b>	
Institutional Distinctives .....	17
Insurance.....	31
Intramural Sports .....	28
<b>J</b>	
Java Junction .....	30
<b>K</b>	
Keyboarding Placement Test.....	26
<b>L</b>	
Location.....	60
<b>M</b>	
Master of Ministries .....	41
Master's of Ecclesiology.....	41
Master of Church Ministries.....	41
Mathematics Placement Test .....	26
Meals.....	30
Ministries .....	65
Music .....	57
Music Auditions .....	26
Music Placement Test .....	26
<b>P</b>	
Placement Tests .....	26
<b>R</b>	
Registration .....	25
<b>S</b>	
Scholarships .....	36
Academic.....	36
Family .....	37
First GSBC Student.....	37
Freedom .....	38
Full-Time Christian Service .....	38
Missionary .....	38
Pastors' Children's.....	38
Scholastic Honors .....	45
School Choir .....	29
Soul Winning.....	31
Students, Transfer.....	24
<b>T</b>	
Teaching Fields.....	54
Business.....	54
English.....	54
History.....	54
Mathematics.....	54
Music .....	54
Science .....	54
Transcript Requests .....	32
Transfer of Credit .....	24